



**BRAC** SCHOOL OF  
JAMES P GRANT PUBLIC HEALTH



Inspiring Excellence

Creating public health leaders and innovative solutions through cutting-edge and experiential Education, Training, Research and Advocacy

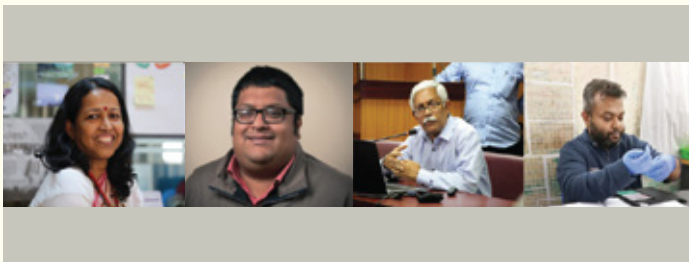


**BRAC James P Grant School of Public Health (JPGSPH), BRAC University**, was founded by Late Sir Fazle Hasan Abed in 2004 in Dhaka, Bangladesh to address the unmet public health challenges particular to Asia, Africa and South America. The School is dedicated to contributing to public health by creating public health leaders and innovative solutions through cutting-edge and experiential **Education, Training, Research and Advocacy.**



Research partnership with BRAC allows the School to contribute evidence to inform BRAC's programmes and policies. BRAC field operations in communities offer a dynamic and diverse learning laboratory for BRAC JPGSPH's Master of Public Health students.

## Snapshots



BRACU ranked **6th** among Bangladeshi universities and research organisations for **Highest Publications** with 4 faculty members from BRAC JPGSPH ranking **3rd, 9th, 11th and 14th** respectively in 2020.



Professor Syed Masud Ahmed, Director, CoE-HS&UHC, ranked among **top 2% scientists in research publications** according to the Stanford World Ranking of Scientists 2020.



In 2018, Professor Sabina F. Rashid and Professor Malabika Sarker received the **Heroines of Health Award at WHO Geneva**, presented by GE Healthcare and Women in Global Health.



BRAC JPGSPH serves as the **Secretariat for Bangladesh Health Watch (BHW)** since 2006.

**\$18** Million USD

Research grants received between 2019 - 2023

**120**

New research grants received between 2019 - 2022

**237**

Researchers across multi-disciplinary fields

## Leadership at BRAC JPGSPH

---



### **Professor Sabina F. Rashid**

Dean and Director of the Centre of Excellence for Gender, Sexual and Reproductive Health and Rights (CGSRHR)

ORCID: <https://orcid.org/0000-0003-0916-2631>



Scan for CV

Professor Rashid joined the School in 2004 when it was set up and was appointed Dean in 2013. She has a PhD, Masters and Bachelors in anthropology and public health from the Australian National University, Canberra, Australia. Professor Rashid oversees the overall leadership and management of the School in its four core pillars (education, training, research, and advocacy) to inform practices and policies. She founded the Centre of Gender and Sexual and Reproductive Health and Rights at the School in 2008, and in 2013, co-founded the Centre for Urban Equity and Health. Her areas of research and teaching interests are ethnographic and qualitative research, with a focus on gender, health, human rights, and services amongst urban populations, adolescents, and marginalised groups in rural and urban Bangladesh. She is particularly interested in examining the impact of structural inequalities and inequities and intersectional factors that affect the ability of these populations to realise their health and rights, and to find solutions to address these challenges. During her career, she has been awarded over US\$19 million in research/capacity building grants and has over 90 publications till date. She has led several multi-country research and capacity-building grants with the Institute of Development Studies (IDS), University of Sussex, Liverpool School of Tropical Medicine, London School of Hygiene and Tropical Medicine, the Royal Tropical Institute (KIT), University of Amsterdam, Radboud University, EngenderHealth, Guttmacher Institute, African Population Health Research Centre, CREA, TARSHI, BRAC, Government of Bangladesh, national NGOs, and networks of marginalised communities. Professor Rashid is a member of several national and international committees and working groups including Rockefeller-BU 3-D Commission led by Boston University, COVID-19 Research Roadmap Social Science Working Group, World Health Organization (WHO), Geneva, and the MRC Wellcome Trust Joint Health Systems Research Committee. She was a Visiting Scientist & Andelot Fellow at the Harvard T.H. Chan School of Public Health from May to July 2022.



### **Professor Malabika Sarker**

Associate Dean and Director of the Centre of Excellence for Science of Implementation and Scale-Up (CoE-SISU)

ORCID: <https://orcid.org/0000-0001-7293-8805>



Scan for CV

Professor Sarker is a mixed method specialist, a doctor with an MPH from Harvard University and a Doctorate in Public Health from the University of Heidelberg. She received her MBBS degree from Chittagong Medical College, Chittagong University, Bangladesh in 1989. In her 30 years of a public health career, Professor Sarker spent ten years implementing community-based programmes at BRAC, the world's largest NGO. She was a research faculty at Heidelberg Institute of Global Health (HIGH), Germany before joining BRAC JPGSPH, and is continuing teaching as an adjunct faculty. During her career, she has taught across four continents and has extensive research experience in Sub-Saharan Africa, has been awarded over US\$ 10 million in research/capacity-building grants, and has 114 peer-reviewed publications and four book chapters. She has led many multi-country research and capacity-building grants with BM, EU, GI, WHO, UNICEF, NIH USA, Agence Nationale de Recherche, Gates, NIHR UK, Fred Hollows Foundation, British Academy, SIMPRINT, GFATM, UNFPA, UK MRC, Bloomberg Foundation Bangladesh, Government of Bangladesh, World Vision, WOTRO, M4M, Rockefeller Foundation, International Growth Centre, ILO, Harvard School of Public Health, USAID, and more. She is the Chair of the Advisory Board of the HRP Alliance for Research Capacity Strengthening (RCS) and a member of many national and international public health committees including the International Advisory Board of the Lancet Global Health and International Immunisation Policy Task Force, World Federation of Public Health Association.



**Professor Syed Masud Ahmed**, Director, Centre of Excellence for Health Systems and Universal Health Coverage (COE-HS&UHC)

ORCID: <https://orcid.org/0000-0001-5032-7181>

Professor Ahmed is the leading researcher on issues related to Bangladesh's journey towards UHC. He received his MBBS degree from Dhaka Medical College in 1978. He has led many multi-country research projects funded by international organisations such as World Bank, GFATM, EU, DFID, ESRC, USAID, MSH, Rockefeller Foundation, Gates, Government of Netherlands, CIDA, EC, NOVIB, WEP, ICRW, UNICEF and AusAID. Professor Ahmed was a Member of the Programme Committee, Global Health Policy and Health Systems Research (GHPHSR) of the NWO-WOTRO (Netherlands Organisation for Scientific Research/Science for Global Development) and the Joint Health Systems Research Committee of the Wellcome Trust. He has been ranked among top 2% scientists in research publications according to the Stanford World Ranking of Scientists 2020.



**Professor Kaosar Afsana** Lead, Humanitarian Research

ORCID: <https://orcid.org/0000-0002-5197-8151>

Professor Afsana has research and implementation experience of over 30 years in reproductive, maternal, neonatal and child health (RMNCH), nutrition, early childhood development, health system, community engagement, and women empowerment. Previously, she served BRAC in Bangladesh for over 26 years as the Director of BRAC Health, Nutrition and Population Programme (HNPP). Professor Afsana received her MBBS degree from Dhaka Medical College in 1983. She was the vice-chair of the Scientific Committee, UN Food System Summit 2021, United Nations, New York, USA. She is also a Member of many national and international public health committees including the Board of Directors, Global Alliance for Improved Nutrition, Geneva, Switzerland, and the External Advisory Committee, International Health and Tropical Medicine, Oxford University, UK.



**Professor Zahidul Quayyum**, Director, Research

Co-Director, Centre of Excellence for Urban Equity and Health (CUEH)

ORCID: <https://orcid.org/0000-0002-2276-4576>

Professor Quayyum has over 25 years of experience in health economics and health systems research. He has worked on research projects for improving maternal and child health in Indonesia, Ghana, Burkina Faso, and Bangladesh and has led several multi-country research projects funded by DFID, UKRI, Wellcome Trust, BRAC, WHO, UKAID, EU, Gates Foundation, USAID and more. Professor Quayyum is a Member of many public health committees including the Health Economic Study Group (HESG), UK; Peer reviewer, health economist for disbursement of research project funds by the National Institute for Health and Care Research (NIHR) and Section Editor (Health Economics and Health Systems), BMC Journal of Health, Population and Nutrition.



**Professor Malay Kanti Mridha**, Director, Centre of Excellence for Non-Communicable Diseases and Nutrition (CNCDN)

ORCID: <https://orcid.org/0000-0001-9226-457X>

Professor Mridha has been leading the implementation of programmes and research in the areas of maternal, neonatal and child health, nutrition, HIV/AIDS, and non-communicable diseases (NCDs). He received his MBBS degree from the University of Chittagong in 1997. He has been awarded multi-country research and capacity-building grants from NIHR, the Government of Bangladesh, JICA, the World Bank, Nutrition International, USAID, Bill and Melinda Gates Foundation, DFID, AusAID, WHO, and more. He is a member of many national and international public health committees including the Executive Committee of the White Ribbon Alliance for Safe Motherhood; American Society for Nutrition and American Physiological Society.



**Associate Professor Md. Tanvir Hasan**, Co-Director, Centre of Excellence for Urban Equity and Health (CUEH)

ORCID: <https://orcid.org/0000-0002-5806-060X>

Associate Professor Hasan is the recipient of the International Postgraduate Research Scholarship (IPRS) and Australian Postgraduate Award (APA). He teaches Biostatistics in the School's MPH Programme and has led many mixed-methods research projects funded by international organisations such as IDRC, BRAC, Grand Challenges Canada, Dutch Government, UN Women, WHO, and more. He is an alumnus of The University of Queensland and a Member of Health Systems Global.

# Education

## Master of Public Health (MPH) Programme

A full-time programme that has been offering transformative learning since January 2005 to develop **next-generation public health leaders**.

Our innovative methodologies engage students in experiential learning and urban-rural community-based fieldwork to strengthen their understanding of public health challenges in a developing world context. We also have a strong pool of global faculty from top academic institutions.

<b>604</b> Graduates from	<b>34</b> Countries	<b>13</b> International Visiting Faculty	<b>98</b> National Practitioners, Facilitators & Faculty
------------------------------	------------------------	---	--

The programme has been recognised for its **excellence in education**.

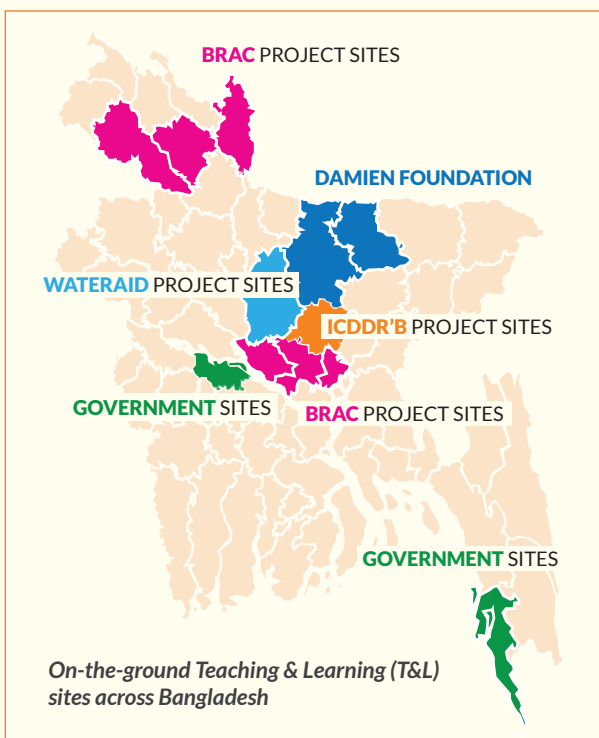
**One of the top Schools in the region**  
Featured by Johns Hopkins University in 2020

**One of the most innovative public health schools**  
Featured by World Health Organization in 2007

**Public Health Education Leadership Award in 2019**  
For significant contribution to promoting Public Health Education at the 9th Biennial South-East Asia Public Health Education Institutions Network (SEAPHEIN)

## MPH Experiential Learning

**36** partners & innovative programmes for experiential community-immersive learning



In addition to classroom learning, our students get the opportunity to practically work in the community and visit service delivery organisations and health facilities which enhances their understanding of public health challenges in both rural and urban contexts.



## Visiting/Guest Faculty and Facilitators from **19** Universities and Institutions

Visiting and guest faculty of diverse disciplines and backgrounds coming from all around the world gives our students the extraordinary opportunity to interact with and learn from global public health practitioners and academics.



**Dr Stephen P Luby, USA**

Professor of Medicine (Infectious Diseases) and Associate Dean for Global Health Research, **Stanford University, USA**

Professor, BRAC JPGSPH



**Miatta Gbanya, Liberia**

Managing Systems in Crisis, **Ministry of Health, Liberia**

Faculty member, BRAC JPGSPH

MPH Graduate, BRAC JPGSPH, 7th Cohort (2011)

**TEDxEuston** speaker



**Ermin Erasmus, South Africa**

Researcher, Health Policy Systems Analysis in South Africa

Visiting Faculty, BRAC JPGSPH



**Dr Alayne Adams, USA**

Associate Professor, Department of Family Medicine, **McGill University**

Professor, BRAC JPGSPH



**Dr Richard Cash, USA**

Senior Lecturer, Global Health and Population, **Harvard T.H. Chan School of Public Health, USA**

Professor, BRAC JPGSPH

**2006 Prince Mahidol Award** winner

Along with a global faculty, we also have a diverse pool of students coming from over **34 countries** which makes for a unique experience of **ONE GLOBAL CLASSROOM**



## MPH Blended Teaching & Learning (T&L)

From March 2020, BRAC JPGSPH started to teach MPH online. As of August 2022, the School is conducting a blended programme online and in-person.

In response to COVID-19, the School fostered innovation and quality T&L to adapt to modern tools of andragogy by introducing:

- Real-time online lectures, online debates, Q/A sessions, reflection write-ups, etc.;
- Virtual research on infectious diseases via online data from countries including Bangladesh;
- Nutrition course: Virtual hospital tour at icddr,b; working with COVID-19 data transcripts (urban and rural) for thesis.



## MPH Graduates Pursuing Higher Studies

The School contributes to public health by creating public health leaders, practitioners, critical thinkers, researchers, advocates, and stewards in order to enable concrete changes and improve the lives of disadvantaged populations locally, regionally, and globally.

**40** MPH Graduates have Completed their PhD

**48** are Currently Pursuing their PhD



## MPH Employability of Our Graduates

**High Placement of BRAC JPGSPH Graduates** by international and national organisations, UN organisations and academic institutes across the globe.



**Sara Baumann**  
5th Cohort (2009)  
USA

Assistant Professor,  
**University of Pittsburgh**  
PhD from **University of Pittsburgh, USA**



**Sabera Turkmani**  
7th Cohort (2011)  
Afghanistan

Post-doctoral Research  
Fellow, **University of Technology Sydney**



**Md. M. Islam Bulbul**  
8th Cohort (2012)  
Bangladesh

Programme Manager,  
National Nutrition  
Services, **Ministry of Health and Family Welfare, Government of Bangladesh**



**Dr Mrittika Barua**  
8th Cohort (2012)  
Bangladesh

Assistant Professor,  
Deputy Director, SISU,  
**BRAC JPGSPH**  
PhD from **Radboud University Nijmegen, The Netherlands**



**Bachera Aktar**  
8th Cohort (2012)  
Bangladesh

Assistant Director,  
**CGSRHR, BRAC JPGSPH**  
Pursuing PhD in  
**Liverpool School of Tropical Medicine**



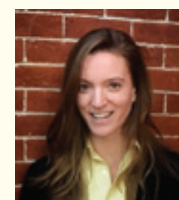
**Lokesh Bhatt**  
9th Cohort (2013)  
Nepal

Monitoring, Evaluation  
and Learning Specialist,  
**The Johns Hopkins Center for Communication Programs (CCP)**



**Zabir Hasan**  
9th Cohort (2013)  
Bangladesh

Assistant Scientist,  
Department of  
International Health,  
**Johns Hopkins Bloomberg School of Public Health**



**Carly Annabelle Comins**  
11th Cohort (2015)  
USA

Sr. Research Program  
Coordinator/  
Data Analyst, **Johns Hopkins Bloomberg School of Public Health**



**Wagdi Ali Mohammed Mohsen**  
14th Cohort (2018)  
Yemen

Reproductive Health  
Coordinator, **United Nations Population Fund (UNFPA)**



**Lily Anna Miatta Kainwo**  
14th Cohort (2018)  
Sierra Leone

One Health Officer,  
Directorate of Health  
Security and  
Emergencies,  
**Ministry of Health and Sanitation, Sierra Leone**



**Rafael Jairah Jr D Matoy**  
16th Cohort (2020)  
Philippines

Epidemiologist  
Research Associate,  
**Clinton Health Access Initiative (CHAI)**



**Vicki Ibbett**  
16th Cohort (2020)  
United Kingdom

Core Psychiatry  
Trainee, **National Health Service, England**



# Building Education Networks Nationally, Regionally, and Globally

The School has been collaborating with its academic partners on a regular basis to foster collaborative learning, facilitate exchange programmes and create opportunities for students and staff members.

As of 2022, the School has **24** academic partners from all over the world.



Yale

Practicum opportunities for students from **University of Arizona, Harvard T.H. Chan School of Public Health, and Yale University** will be made possible through exchange programmes.



The School is in partnership with **The University of Hong Kong (UHK)** to strengthen the academic tie between the two institutes and facilitate the exchange of faculty and students as well as co-developing courses.



In order to enrich the professional capacity of the School's public health practitioners, BRAC JPGSPH in partnership with **City University of New York (CUNY), USA**, is offering a certificate programme in **Population Health Informatics**.

The School has been awarded multiple prestigious grants for its continued contribution to public health.



**BRAC JPGSPH is one of the 7 global academic institutions** selected by Training in Tropical Diseases Research (TDR) Fellowship.

**72 students** from our MPH programme have received the scholarship to date.

The School was awarded second **Five-year Grant of US\$1 Million** in 2017-18

## Capacity-Building in Higher Education



Funded by the European Union

**BRAC JPGSPH** was selected by the European Union (EU) in 2018 for grant in capacity-building in higher education.

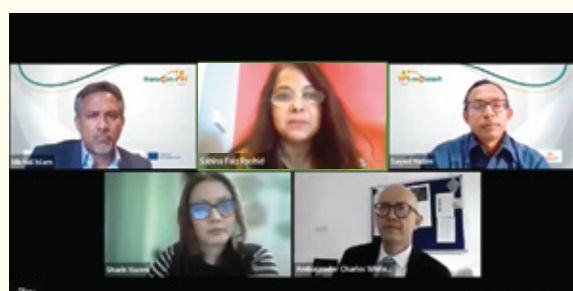
**BRAC JPGSPH** led the grant in partnership with **International Centre for Climate Change & Development (ICCAD), Independent University of Bangladesh (IUB), and Asian University for Women (AUW)**. Programme country partners from Europe: **Maastricht University, Netherlands and Institute of Development Studies, UK**.

**US\$1 Million** awarded by EU



For more information about Education, scan the QR code

## Education Impact Nationally, Regionally, and Globally



### National Symposium

**Transforming Bangladesh's Health Workforce for Sustainable Health Impact: Creating Holistic Public Health Learning Ecosystem (January 2022)**

The aim of the virtual event was to discuss ways to move forward for transforming higher education curriculum across different departments within the consortium and other public health institutions.

**17** public health experts and academicians from **8** academic institutes of 4 countries presented with over **100 attendees**.



### Public Health Consortium

**Established in 2020 by BRAC JPGSPH**, the Consortium consists of public health departments and schools in 13 Universities in Bangladesh.

It was formed in the light of the unprecedented COVID-19 public health crisis to provide a platform to its university partners to **collaborate on and innovate online teaching and learning and community-based research designs to assist disadvantaged communities**.



In 2020, BRAC JPGSPH joined **SingHealth Duke-NUS Global Health Institute Alliance**.

Dean Professor Sabina F. Rashid and Associate Dean Professor Malabika Sarker were invited to be members of the alliance.

As part of the platform, Professor Rashid will be attending the **7th World One Health Conference (WOHC)** and **Temasek Foundation Pinnacle Partnership Series** in November 2022.



### Consortium of Universities for Global Health: 13th Annual Global Health Conference in March 2022

CUGH is a US based platform of over 170 organisations around the world engaged in addressing global health challenges.

**BRAC JPGSPH co-hosted the CUGH Conference with 8 other institutions and was the only organisation from South Asia.**

**Professor Sabina F. Rashid was part of the Executive Planning Committee.**

# Diploma in Midwifery Programme (DMP)

This innovative educational initiative started its journey of developing competent and committed midwives in 2012.

Bangladesh has made a commitment to end preventable child and maternal deaths by 2030. An estimated 22,000 midwives will be required to meet the national need. Co-funded by the UK government and BRAC, the project develops around 230 midwives every year in partnership with renowned local NGOs.

## 1374

Students Enrolled since 2012

## 200

Students Received Financial Aid since Inception

## 137

Midwives are Serving at the Rohingya Camps

## Strategic Partnerships

BRAC JPGSPH partnered with **6 NGOs** working in remote areas of Bangladesh, for producing competent midwives and increasing access of disadvantaged young women to the education course.

## Midwife-Led Care Centres

BRAC JPGSPH set up Midwife-Led Care Centres (MLCs) in collaboration with Directorate General of Family Planning (DGFP) in two **Union Health and Family Welfare centres** and in **BRAC Maternity Clinic** in Dhaka.

From 2018 – 2021, **MLCs supported 4,296 women** to have normal deliveries.

## Community Engagement

DMP students engage with community initiatives to strengthen the understanding of sociocultural determinants.

**8 modules involve community placements.**



## Achievements

**231 Midwives** from the DMP 5th batch successfully graduated in 2021, with **100% Pass Rate** of the comprehensive (license) examination by the Bangladesh Nursing and Midwifery Council (BNMC).

DMP graduate from the 2nd batch selected as the **President of Bangladesh Midwifery Society (BMS).**

In March 2022, jointly organised the seminar, **“A Decade of Midwifery in Bangladesh”**, with the Government, British High Commission and UNFPA.

DMP midwives assisted BRAC Health, Nutrition and Population Programme (HNPP) with COVID-19 **Vaccine Administration in 9 Centres of Dhaka**, Bangladesh in August 2020.

# Training Enhancing Skills of Professionals

The Centre for Professional Skills Development (CPSD) enables the continuation of education for professionals by crosscutting across the themes of the five Centres of Excellence and the Humanitarian Hub.

**Established in 2007**, CPSD, the School's international training hub, strengthens and upgrades the requisite professional skills utilised by practitioners, policymakers, development partners, Government officials, public advocates, educators, researchers and frontline health workers.

**260+** Seminars and Workshops

**325+** Global Facilitators

## Research capacity building

Quantitative, qualitative, and mixed research methodologies, systematic review, implementation research, and data analysis using statistical tools

## Leadership and management in public health

Governance and leadership, project management, monitoring and evaluation, and economic evaluation of programmes

## Introduction to emerging public health issues

Urban health, climate change, food safety and security, and malnutrition

## Gender diversity training

Countering Sexual and Gender-Based Violence (SGBV) and sensitisation on diverse sexualities

## Skills Building for Researchers, Professionals, and Practitioners

CPSD provides practical skill-based training for relevant public health priorities and encourages solution-oriented thinking to address practical and real-world challenges.

### Select Training



#### Basic Quantitative Research Methods, Data Analysis, and Report Writing using STATA

- Professionals from **10 countries trained**



#### Capacity Building Training on "Evaluation of Development Programme" for Implementation Monitoring and Evaluation Division (IMED) Officials

- **20 Government** officials trained



#### Training of Primary Healthcare Providers Working in Rohingya Refugee Camps in Cox's Bazar

- **409 trained** during COVID-19 pandemic in collaboration with the Government of Bangladesh

The Skills Building Workshops & Short Courses offered by the School include a wide range of participants including Government officials, medical doctors, senior health education officers, senior staff nurses, researchers, statisticians, NGO and INGO sector specialists, development practitioners, programme officers and managers, academics, activists, and more.

**7300+** Professionals Trained



For more information about Training, scan the QR code

## Research Bringing Evidence To Practice

**240+** National & Multi-Country Research Projects

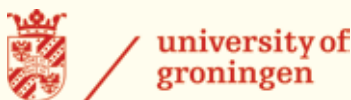
The research at the School focuses on transforming evidence into action for change by combining grounded community focused research and analysis to inform the **Government, BRAC, other service delivery organisations, key stakeholders, civil society, and donors. Research conducted at the School includes: randomised control trials, impact evaluations, economic evaluations, geospatial experimental method, ethnographies, qualitative research (i.e. visual diaries, deliberative interviews, photo and voice narratives), programme evaluations, process evaluations, surveillance, implementation research, and community-based participatory research.**

Through the School's extensive global and national partnerships and networks, multi-disciplinary research teams lead the **Five Research Centres and Humanitarian Hub** covering a range of areas including: urban and rural health, socioeconomic development, poverty, marginalised communities (i.e. refugees, slum dwellers, ethnic minorities, sexual minorities, persons with disabilities), infectious diseases, non-communicable diseases, nutrition, gender equity and rights, maternal and child health, urban equity, sexual and reproductive health and rights, digital health, sexuality, violence against women and children, human rights, health systems and workforce, anti-microbial resistance, health equity, healthcare financing, and financial inclusion and wellbeing in urban and rural areas in the country.

**In order to address emerging and complex national and global health challenges, the School has also been conducting cutting-edge research that transcends disciplinary boundaries** which recently includes emerging infectious diseases, climate change and environment, energy, health informatics, mental health, migration, passive cooling, genetic epidemiology, health technologies, artificial intelligence, and clinical research.

# 95+ International and National Funders: Last 5 Years





# 125+ International Research Partners: Last 5 Years

## Asia

- Anzhen Hospital, China
- Asian-Pacific Resource and Research Centre for Women (ARROW), Malaysia
- Building Foundation for Development (BFD)
- Chen Yet-Sen Family Foundation
- CREA, India
- Duke Kunshan University, China
- Gadjah Mada University, Indonesia
- George Institute for Global Health, India
- Good Business Labs Foundation
- Global Innovations Consultancy Services (GLICS)
- HERD International, Nepal
- HealthServe, Singapore
- Indian Institute of Health Management Research (IIHMR), India
- Japan International Cooperation Agency (JICA)
- L V Prasad Eye Institute Clinical Trials Unit
- Mahidol University, Thailand
- National University of Singapore
  - Saw Swee Hock School of Public Health (SSHSPH)
- Northern Ireland Clinical Trials Unit
- Quicksand Design Studio, India
- Tehran University of Medical Sciences, Iran
- Sana'a University, Yemen
- Sharif University of Technology, Iran
- Slum and Shack Dwellers' International (SDI), India
- The University of Hong Kong
- Tsinghua University, China
- University of the Philippines
- Vital Strategies

## Africa

- African Population and Health Research Centre (APHRC), Kenya
- College of Medicine and Allied Health Science, (COMAHS), Sierra Leone
- Faculty of Public Health, College of Medicine, University of Ibadan, Nigeria
- Hidase Hulantenawi Agelglot Yebego Adragot Mahber, Ethiopia
- LVCT Health, Kenya
- Makerere University (MU), Uganda
- Reach Trust, Malawi
- School of Public Health and Social Sciences, Muhimbili University of Health and Allied Sciences (MUHAS), Tanzania
- NUOD (National Union of Disabled), Uganda
- School of Public Health, Addis Ababa University, Ethiopia
- School of Public Health, Université de Kinshasa, Congo
- Sierra Leone Urban Research Centre (SLURC), Njala University, Sierra Leone
- Universidade Eduardo Mondlane, Mozambique
- University of Ghana
- University of Nigeria

## South America

- Universidad de los Andes, Colombia



## Europe

- Amsterdam Institute for Global Health and Development (AIGHD)
- CENSIS
- Center for Evaluation and Development (C4ED)
- Centre Population et developpement (CEPED), IRD
- Centre Regional De Recherche Et De Formation A La Prise En Charge Clinique Du Vih Sida et Maladies Associees de Dakar (CRCF)
- CHOICE for Youth and Sexuality
- Clearly Initiatives
- Dance4Life
- Dutch Research Council
- Erasmus University Rotterdam, Netherlands
- ETH, Zurich
- Food and Agriculture Organization of the United Nations (FAO)
- France Nesta Enterprise Ltd.
- Gender and Adolescence: Global Evidence Programme, Programme Overseas Development Institute (GAGE ODI)
- Global Alliance for Improved Nutrition (GAIN)
- Graduate Institute, Geneva (IHEID), Switzerland
- Hivos
- Imperial College London
- Institute of Health and Wellbeing, University of Glasgow
- Institut Pasteur, France
- International Fund for Agricultural Development (IFAD)
- Ipsos MORI, UK
- KiKid
- King's College London
- KIT Royal Tropical Institute, Netherlands
- Leonard Cheshire
- London School of Hygiene & Tropical Medicine, (LSHTM)
- Loughborough University, UK
- Liverpool School of Tropical Medicine (LSTM)
- Ludwig Maximilian University of Munich (LMU)
- Maastricht University, Netherlands
- Medical University of Vienna (MUW), Austria
- Nuffield Centre for International Health and Development
- Public Health Center, Ministry of Health (PHC), Ukraine
- Public Health England
- Queen's University Belfast
- Radboud University, Netherlands
- Rotterdam Global Health Initiative (RGHI), Netherlands
- Rutgers International
- Share-Net International
- Sightsavers
- Stichting Nederlands Insttuit Voor Onderzoek Van De Gezondheidszorg (NIVEL)
- University College London (UCL)
- University of Amsterdam
- University of Heidelberg, Germany
- University of Groningen, Netherlands
- University of Leeds
- University of Ljubljana, Slovenia
- University of London
  - School of African and Oriental Studies (SOAS)
- University of Malta
- University of Sussex
  - Brighton & Sussex Medical School
  - Institute of Development Studies (IDS)
- University of York
- World Food Programme (WFP)

## North America

- American Institutes for Research (AIR)
- Ames Research Center, NASA
- Arizona State University, USA
- Bill & Melinda Gates Foundation
- Cambridge Reproductive Health Consultants (USA)
- Canadian Urban Environmental Health Research Consortium (CANUE)
- Community Partners International (CPI)
- Dimagi
- Duke University, USA
- Fhi Solutions
- Georgetown University, USA
- Guttmacher Institute (USA)
- Harvard University
  - T.H. Chan School of Public Health
- International Finance Corporation, The World Bank Group

- Johns Hopkins University
  - Bloomberg School of Public Health
- McGill University, Canada
- Simon Fraser University, Canada
- Stanford University
- The Task Force for Global Health
- The University of Chicago
- UNDP
- UNICEF
- United Nations Population Fund (UNFPA)
- University of British Columbia
  - School of Population and Public Health
- University of California, Berkeley
- University of California, Davis (UC Davis)
- University of Massachusetts, Amherst
- University of Ottawa, Canada
  - Faculty of Health Sciences
- University of Toronto, Canada
- World Bank

## 75+ National Research Partners: Last 5 Years

- ARCED Foundation
- ARK Foundation
- Asian University for Women (AUW)
- Asiatic Marketing Communications Limited
- Association for the Prevention of Septic Abortion, Bangladesh (BAPSA)
- Association of Development for Economic and Social Help (ADESH)
- Bandhu Social Welfare Society
- Bangabandhu Sheikh Mujib Medical University
- BGMEA (Bangladesh Garment Manufacturers and Exporters Association)
- Bangladesh Health Watch (BHW)
- Bangladesh Legal Aid and Services Trust (BLAST)
- Bangladesh Mahila Parishad

- Bangladesh Rice Research Institute (BRRI)
- Bangladesh University of Health Sciences (BUHS)
- Bohnishikha - Unlearn Gender
- BRAC
  - BRAC Adolescent Development Programme (ADP)
  - BRAC Advocacy for Social Change (ASC)
  - BRAC Community Empowerment Programme (CEP)
  - BRAC Education Programme
  - BRAC Gender Justice and Diversity (GJD)
  - BRAC Health Nutrition and Population Programme (HNPP)
  - BRAC Humanitarian Crisis Management Programme (HCMP)
  - BRAC Integrated Development

- Programme (IDP)
- BRAC Microfinance Department
- BRAC Skills Development Programme (SDP)
- BRAC Urban Development Programme (UDP)
- BRAC University
  - Centre for Peace and Justice (CPJ)
  - BRAC Institute of Educational Development (BRAC IED)
  - BRAC Institute of Governance and Development (BIGD)
  - Department of Architecture
- Community Health Working Group
- Department of Public Health, North South University
- Dhaka Electric Supply Company Limited (DESCO)
- Family Planning Association of Bangladesh (FPAB)
- Government of the People's Republic of Bangladesh
  - Bangladesh Bureau of Statistics
  - Bangladesh Institute of Research and Rehabilitation in Diabetes, Endocrine and Metabolic Disorders (BIRDEM)
  - Cabinet Division
  - Department of Social Services, Ministry of Social Welfare
  - Expanded Program on Immunization (EPI)
  - Institute of Public Health Nutrition (IPHN), Directorate General of Health Services (DGHS)
  - Maternal, New-born, Child & Adolescent Health (MNC&AH), Directorate General of Health Services (DGHS)
  - Ministry of Education (Secondary Education Department)
  - Ministry of Food
  - Ministry of Health and Family Welfare (MoHFW)
  - Ministry of Women and Children Affairs (MoWCA)
  - National Tuberculosis Control Programme (NTP)

- Non-Communicable Disease Control (NCDC), Directorate General of Health Services (DGHS)
- Sylhet City Corporation
- Icddr,b
- Independent University, Bangladesh
  - International Centre for Climate Change and Development (ICCCAD)
- JiVitA
- Lightcastle Partners
- Marie Stopes Bangladesh
- Maya Apa
- Manusher Jonno Foundation (MJF)
- MOMODa Foundation
- Moner Bondhu
- mPower Social Enterprises Limited
- Naripokkho
- National Institute of Cardiovascular Diseases (NICVD)
- National Institute of Mental Health and Hospital (NIMH)
- Narir Shastho, Odhikar o Icchapuron - Women's Health, Rights, and Choices (SHOKHI)
- Oboyob Diversity Circle
- RedOrange Media and Communications
- Reproductive Health Services Training and Education Program (RHSTEP)
- RTM International
- Save the Children
- SERAC-Bangladesh
- Shornokishoree Network Foundation (SKNF)
- Supporting People and Rebuilding Communities (SPARC)
- Transparency International
- United for Body Rights (UBR) Alliance
- University of Dhaka
  - Institute of Nutrition and Food Science
- University of Liberal Arts Bangladesh
- Women with Disabilities Development Foundation (WDDF), Bangladesh
- World Health Organization (WHO), Bangladesh
- World Vision, Bangladesh

**5** Centres of Excellence and a Humanitarian Research Hub investigate pressing and emerging health needs in a developing world context and identify evidence-based solutions to inform programmes and policies.



### Centre of Excellence for Gender, Sexual and Reproductive Health and Rights (CGSRHR)

**Established in 2008**, the Centre promotes a broader understanding of gender and Sexual and Reproductive Health and Rights (SRHR) in Bangladesh and the region through research, advocacy, and capacity-building activities. It generates and translates knowledge into advocacy-based action for social and structural changes. Research areas include gender, SRHR, power relations, masculinities, sexuality, trafficking, disability, diversity, adolescence health, and more.

### Centre of Excellence for Health Systems and Universal Health Coverage (CoE-HS&UHC)

**Established in 2012**, the Centre generates evidence to inform key stakeholders on necessary health system interventions or modifying existing interventions. Research areas include universal health coverage, equity and social determinants of health, Human Resources for Health (HRH), pharmaceutical R&D, absenteeism and rural retention, corruption, epidemic/pandemic preparation, adolescent health, and health of marginalised populations.



### Centre of Excellence for Urban Equity and Health (CUEH)

**Established in 2013**, the Centre addresses existing challenges of the urban health system to ensure equity for the urban poor. Research areas include climate change, environment, migration, strengthening of health systems, urban health governance, innovations in service delivery models, developing strategies for building equitable healthy cities, health care financing, nutrition, food security, and disability in the urban context.

### Centre of Excellence for Science of Implementation and Scale-Up (CoE-SISU)

**Established in 2016**, the Centre aims to link research and practice to accelerate the implementation and scale-up of health policies, programmes, and practices by emphasising partnerships between implementors, researchers, and stakeholders. Research areas include maternal, neonatal, child health, disability, health systems, vaccination, climate change, migration, and artificial intelligence with gender, equity, and digital health as cross-cutting themes.





### Centre of Excellence for Non-Communicable Diseases and Nutrition (CNCDN)

**Established in 2017**, the Centre develops research, training, guidelines, policy, partnership, and networking with the aim to prevent and control non-communicable diseases (NCDs) and malnutrition in Bangladesh and the Global South. Research areas include NCDs, malnutrition, practices in clinical and population settings, implementation of health system research, and evaluation of novel and evidence-based interventions.

### Humanitarian Research Hub

**Established in 2021**, the Humanitarian Hub carries forward the humanitarian research that started at the School in 2018. The Hub conducts research in collaboration with the Centres of Excellence on the forcibly displaced Myanmar nationals and host populations to comprehend the gaps in public health service delivery and to identify challenges to improve their health and well-being. Research areas include maternal, child, and adolescent health, sexual and reproductive health, early childhood development, and mental health and well-being.

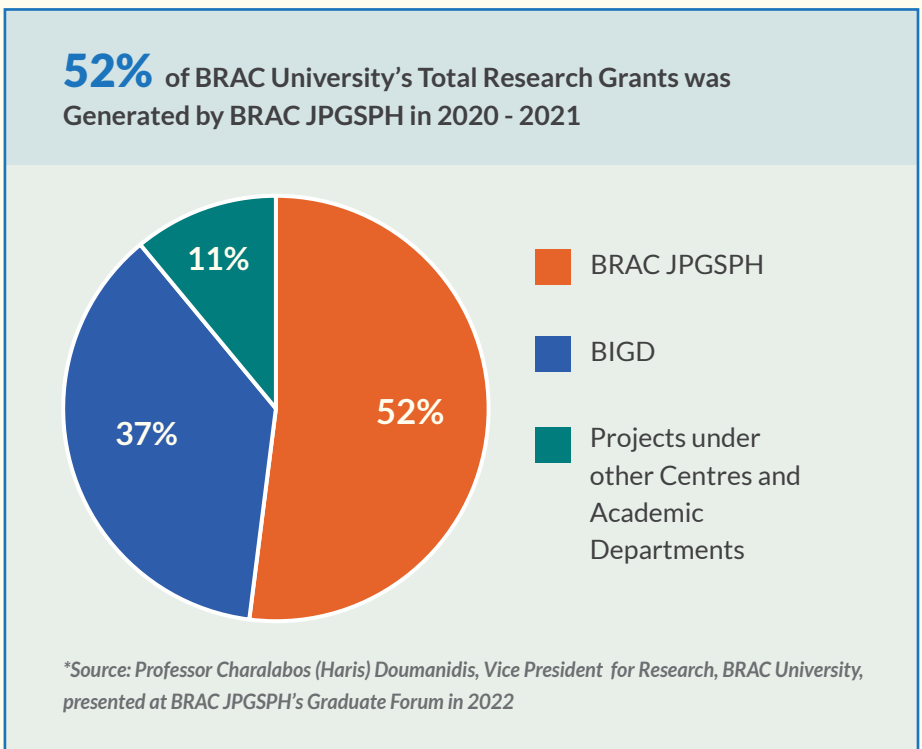


Scan the QR code and see more about our centres

## BRAC JPGSPH Research Grants Awarded

Research Grants  
Generated by  
the School in  
2013 - 2021

**\$36**  
Million  
USD



## Research Impact Working With Communities, NGOs, Stakeholders, and the Government

The School is committed to conducting research with communities, NGOs, and other key stakeholders and Government to ensure there is co-design and development of research tools and methods to ensure appropriate programme design and contextually-relevant policies of national and global importance.



### Prioritizing Adolescent Nutrition in the 8th Five Year Plan (2020)

- Research on under and over-nutrition among adolescents in Bangladesh, with a cost-benefit analysis of 6 adolescent nutrition interventions led by Centre of Excellence for Non-Communicable Diseases and Nutrition (CNCDN)
- **Presented evidence** with 3 policy dialogues to the government, policymakers and programme managers
- **Developed key points** for prioritising adolescent nutrition provided to the Planning Ministry

### Introducing the First-Ever Model Pharmacy and Drug Shop Initiative

- The research was conducted to map private sector drug shops as part of the **Bangladesh Pharmacy Model Initiative (BPMI)** programme of **Accredited Drug Seller (ADS)** project in partnership with **Directorate General of Drug Administration (DGDA), Ministry of Health and Family Welfare, the Government of Bangladesh, Management Science for Health (MSH)**
- Based on the evidence, a model pharmacy and drug shop initiative began and was later scaled-up across all the districts in the country



### South Asia Biobank | Strengthening Non-Communicable Disease Surveillance in South Asia (2021 - 2023)

- 30 surveillance sites across Bangladesh to quantify cardiovascular diseases and Type 2 Diabetes burden and their risk factors

### App-Based Individual Tracking of Children for Vaccination (EPI E-Tracker)

- Implementation research to document and explore the app-based individual e-Tracker system used for vaccinating children in areas of Dhaka and Moulavibazar and **identify challenges, lessons learnt, solutions to scale-up, and success stories**
- Training, resource mobilisation, field monitoring, challenges at the field level, and acceptance of the new system by health managers, health workers and beneficiaries were also reviewed





## Cool Roof Research: Accelerate Affordable and Sustainable Materials

In partnership with Department of Architecture, BRAC University, a participatory research was conducted with communities to apply the Cool Roof coatings on houses at Karail slum and two Garment factories in Dhaka.

The research also involved collecting thermal data, documentation of buildings, and conducting comfort and health surveys among users.

Research evidence revealed good results in terms of reduction in indoor temperature due to the application of cool roof coating.

## Research Impact Rohingya Community & Urban Informal Settlement Dwellers

### ARISE | Accountability and Responsiveness in Informal Settlements for Equity

- Multi-consortium grant in **4 countries** in Africa, Asia, and the UK
- Working with communities in **3 urban informal settlements in Dhaka and 2 climate-affected in Khulna and Shatkhira**
- Working in partnership with **BRAC Urban Development Programme (UDP)**
- Jointly conducting community-based participatory research and GIS Mapping, with **6 co-researchers living in the communities;** and building their capacity
- **3 regional-level workshops and 2 large-scale stakeholder engagements** - presenting evidence on urban informal settlement dwellers and gaps in service interventions
- Participants include: **Community members, BRAC field staff, representatives from Dhaka South and North City Corporation, Ward Councillors, Government agencies i.e. WASA, LGED, Urban Primary Health Care Services Delivery Project (UPHCSDP),** and other NGOs



### Community-led Responsive and Effective Urban Health Systems (CHORUS)

A Research Programme Consortium: **Africa, South Asia, and the UK.** Building a resilient and responsive urban health system to counter:

- Double burden of Communicable and Non-communicable Diseases,
- Dominance of NGO sector,
- Low health service coverage for marginalised urban people





## Post-Fire Incident Rapid Assessment Report of Affected Rohingya Camps

- A massive fire broke out in the camps of Ukhiya on 22 March 2021. Around **92,000 people** were impacted
- BRAC JPGSPH was requested to undertake research to understand the **priorities and needs of the Forcibly Displaced Myanmar Nationals (FDMN)** in affected areas
- The evidence from the Rapid Assessment was presented to **6 sectors of the Intersectoral Coordination group, Cox's Bazar**, in April 2021 to provide sector-specific recommendations for immediate uptake and interventions

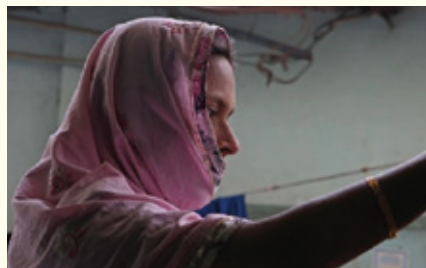
## Research Impact Neglected Communities

### Gender-diverse communities



- **Documentary on gender-diverse movement-building** in 2017 and 2022
- **Fellowship to 6 gender-diverse individuals** in 2020
- **Art for Advocacy initiative in partnership with gender-diverse individuals** to empower their voices (2022)

### Structurally silenced women



- **Indigenous women:**
  - Digital Financial Inclusion and Economic Empowerment
  - Amplifying voices and visibility in online and public spaces (2022)
- **Commercial Sex Workers:**
  - Research on COVID-19 impact (2020)
  - Engaging in policy and law-making to demand their rights (2022)

### Persons with Disability (PWD)



- **Community researchers** to conduct research on **youth with disability**. Findings shared with the **State Minister of Social Welfare (2022)**
- **Nationwide Study of SRHR of PWD** including policy dialogue
- Promoting SRHR of PWDs in Bangladesh in the Context of **SGDs and UNCRPD**

### Human Trafficking



- Disrupting cross-border trafficking for sexual exploitation through **Prevention, Protection, Prosecution, and Partnership**

### Street dwellers



- Exploring the **health care needs of street dwellers** in 2019
- Ethnography of **street vendors living in slums** from 2020 - 2022

### Migrants



- **Migrant worker study on COVID-19** assessing perceptions of risk, power and persuasion



# COVID-19 Research

Since the outbreak of COVID-19 in April 2020, BRAC JPGSPH has undertaken **45 rapid quantitative and qualitative research assessments** focusing on Bangladesh's poor and vulnerable populations including Urban Poor, Rural Poor and Extreme Poor, People living in Hard to Reach Areas, Front-line workers, Community Health Workers (CHWs), Ready Made Garments (RMG) Workers, Daily-wage Earners, Informal Slum Settlement Residents, Domestic Workers, Minorities, Persons with Disabilities, Sex Workers, Rohingya, and others.

**45** Rapid Quantitative & Qualitative Research Assessments

**21** Research Briefs

**36** Peer-Reviewed Publications and **95** News Articles

## Select Briefs and Publications



**Bangladesh health system's response to COVID-19 during first 9 Weeks**



**Immunisation backlogs:** The effects of COVID-19 pandemic on child vaccination in Bangladesh using Households Surveys



**The Impact of COVID-19 on the social, economic, and psychosocial wellbeing of Sex-Workers in Bangladesh**



**COVID-19 and the fear of other unknowns:** challenges and lessons learnt from a digital contact tracing activity in the Rohingya camps in Cox's Bazar, Bangladesh



**Low uptake of COVID-19 prevention behaviours & high socioeconomic impact of lockdown measures in South Asia:** evidence from a large-scale multi-country surveillance programme



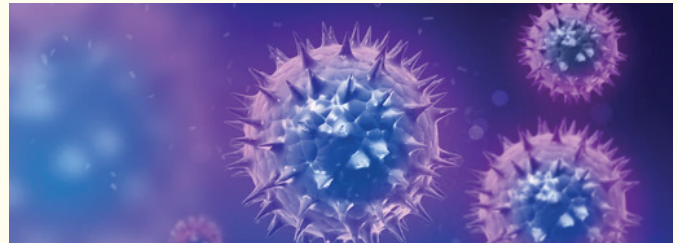
**Slum Health:** Arresting COVID-19 and Improving Well-Being in Urban Informal Settlements

# COVID-19 Research Active Engagement with Stakeholders & Government

Since April 2020, BRAC JPGSPH organised **seminars, conferences, policy dialogues; news articles and blogs;** and hosted **over 50+ Webinars on multiple themes**, including: Gender and Risks, Vulnerabilities, COVID-19 Stigma and Risk Communications, Vulnerable and Marginalised Populations, Personal Protective Equipment (PPE), Waste Management, Nutrition, Immunisation and Vaccination, Emotional and Mental Health, University and School-going students' distress and needs.



**Dialogue with Government on COVID-19 in February 2020** with Institute of Epidemiology, Disease Control and Research (IEDCR)



**Engaging with 30 journalists to share evidence** on plight of urban poor, transgender, community health workers, and PPE

**50+** Webinars attended by **170** Health Experts from **17** countries

Webinar on **Emotional and Mental Wellbeing during COVID-19** in May 2020

Webinar on **Successes and Challenges of public health measures & medical care in COVID-19** pandemic and the future with NUS, Singapore in June, 2020

Webinar on **COVID-19 Impact on Urban Informal Settlements: Vulnerabilities, Challenges and Responses** from Bangladesh, India, Kenya and Sierra Leone, in May 2020

## International Conference on COVID-19, January 2022

Learning from the COVID-19 Pandemic for the Future of Healthcare Systems in Low and Middle-Income Countries



**31** Global Health Experts from **18** Countries

From 19-21 January 2022, BRAC JPGSPH and Bangladesh Health Watch (BHW) jointly hosted this virtual conference. Global Health Experts from around the world joined virtually to discuss the lessons learnt and reflect on what needs to be done to address the critical gaps as we move forward, particularly the challenges and opportunities of achieving the Sustainable Development Goals (SDGs).



Scan the QR code for more information

# Peer-Reviewed Research Publications Sharing evidence globally

825+ peer-reviewed publications have been published in international journals as well as peer-reviewed book chapters since the School's inception in late 2004.



- Rohingya research project awarded with **Outstanding Paper by The International Journal of Information, Diversity, & Inclusion (IJIDI)**
- BRAC JPGSPH researchers published in **Global Burden of Disease 2017 Series: The Lancet**

## Regional network: COVID-19 research

**Social Science Compendium:**  
'Social Sciences and COVID-19: The Southeast Asia Response.'

Scan the code to access the report

## Global COVID-19 research

**Viral Loads:**  
Anthropologies of urgency in the time of COVID-19

Scan the code to access the book

# Advocacy Influencing Policies and Programmes Nationally, Regionally and Globally

Advocacy is an integral part of all research conducted by the School.

The aim of the 5 Centres of Excellence and the Humanitarian Research Hub is to continually engage in translating **research evidence to inform programme and policy interventions.**

<h2>285+</h2> <p>Active Engagements, to Influence Policies and Programmes with Multi-Stakeholders, including BRAC and the Government</p>	<h2>230+</h2> <p>News Articles and Blogs Published since April 2020</p>	<h2>55+</h2> <p>Webinars on Multiple Themes</p>
--	---	---



**Policy Dialogue Workshop with the Prime Minister’s Office on Promoting SRHR of Persons with Disabilities:** Discussion in the context of SDGs and the United Nations Convention on the Rights of Persons with Disabilities in 2020



**National Curriculum and Textbook Board (NCTB)** accepts the pictorial booklet developed by BRAC JPGSPH as Supplementary Resource Material (SRM)



**Generation of Insights and Policy Recommendations from the Gender & COVID-19 Project:** The evidence was shared through a conference in June 2022. The project was funded by Bill and Melinda Gates Foundation



**Managing Impact of COVID-19 by Contextually Adapting a COVID-19 Contact Tracing App:** The evidence was generated in collaboration with BRAC Humanitarian Crisis Management Programme (HCMP) and Dimagi



**Urban Health Innovation Challenge 2021** to promote youth-led, community-centric solutions for building resilient and inclusive cities



**9th Regional Public Health Conference (2022):** Progress Made and Way forward in Non-Communicable Diseases (NCDs) in Bangladesh  
BRAC JPGSPH hosted a session



### Psychodrama as Transformative Intervention in Sexual and Reproductive Health (SRH) of Young Men in Urban Slums of Dhaka

In 2019, Asaduzzaman Noor, MP, former Minister of the Cultural Affairs, Government of Bangladesh inaugurated findings sharing event



### Video Documentary: Birth & Death Registration in Bangladesh

Funded by UNICEF, this video, produced in November 2020, explores critical implementation drivers and barriers of the birth and death registration system carried out by the Government of Bangladesh

## Voices from the South



**Partnership at South Asian Regional Film Festival in 2022:** It featured **13 national and international** short films, documentaries, and feature films on gender-based discrimination, violence, transphobia, breaking the gender binaries, and toxic masculinity.



Selected as the implementing regional partner on health and human rights in Bangladesh in 2020 by **Sexual and Reproductive Health Matters (SRHM)**.



The first-ever three-day **Global Conference on Implementation Science (GCIS)** in 2019

250 participants from 30 countries attended.

Associate Dean Dr Malabika Sarker led this with partners



BRAC JPGSPH contributed in **Toolkit for Participatory Health Research Methods**, put together in 2021 by different projects at **Liverpool School of Tropical Medicine (LSTM)**



As Member of the **3-D Commission Global Board**, funded by **Rockefeller Foundation** Professor Sabina F. Rashid contributed to the report "Data, social determinants, and better decision-making for health" in 2021



For more information about Advocacy, scan the QR code

## Bangladesh Health Watch (BHW)

Bangladesh Health Watch (BHW) is a multi-stakeholder civil society advocacy and monitoring network dedicated to improving the health system in Bangladesh through critical reviews of policies and programmes and recommendation of appropriate actions for change.

It was established in 2006 with the aim to monitor progress in health and health systems impacting people of Bangladesh, and play a catalytic role in making lasting changes in the health sector. A Working Group consisting of researchers and activists from different organisations carry out the different activities for BHW.

**BRAC JPGSPH serves as the Secretariat for BHW since its inception.**



To document the success of the country's health sector, Bangladesh Health Watch published a book '**Swadhinotar Ponchas Bochor: Bangladesher Shastho Khater Bikash**', in April 2022. A total of 101 authors from home and abroad contributed to the book.



BHW introduced **Citizen's Voice where citizens can ask questions and submit queries about health services**. Through national helpline number 333, citizens can ask questions through phone call. In collaboration with a2i, answers to the questions are collected from DGHS.



**COVID-19 Research hub was initiated by BHW** in June 2021 to house all COVID-19 publications conducted by Bangladeshi researchers world wide. At present, the hub contains around 959 research articles.



**Capacity-building initiative: training on "Effective Health Reporting" for local journalists in 8 regional chapters** was jointly conducted by BHW and District Health Rights Forum In June 2022. 120 District correspondents of national media participated in the training.



**Capacity building training for District Health Rights Forum and Districts Health Rights Youth Forum members** was organised in 8 regional chapters. The objective was to enrich their knowledge of primary and secondary health service structure, local level advocacy approaches and techniques.



In 2021, BHW initiated **short courses for duty bearers in the health sector**. A total of four short courses have been conducted including one pilot course: Responding to the pandemic, good governance in the health sector, equity in accessing healthcare, and voice and participation.



**University Grants Commission (UGC) members attended** an advocacy meeting in Khagrachhari district sadar hospital jointly organised by BHW and District Health Right Forum in September 2022. **Dr Biswajit Chanda, honorable member of UGC,** and **Dr Muhibul Ahsan, Deputy Director of UGC,** were present.



**Pre-budget dialogue** was organised by BHW and Unnayan Shamannay in June 2022 at The Daily Star. The dialogue discussed about **higher budget allocation under health sector in the National Budget.**



**Roundtable Discussion on Universal Health Coverage and engagement of the civil society** was organised by BHW in collaboration with **Chatham House** and **UNICEF Bangladesh** in September 2022. The discussion focused on opportunities, challenges, and priorities in health financing, at the Primary Health Care (PHC) level.



**Policy Brief “Reviewing Health Sector Allocation (Budget 2022-23)”** was published by BHW in August 2022 as part of **evidence-based advocacy on health sector expenditure in Bangladesh.** Its findings and recommendations are expected to inform policymakers on improvements in the health budget to reduce the burden of health expenditure on the citizens.



2022

In March 2022, BHW published its report titled: **COVID-19 in Bangladesh: The First Two Years and Looking Ahead.** The report covered different aspects of the COVID-19 pandemic in the context of Bangladesh. People’s knowledge, attitude and practice, risk communication, health system, and other civil society responses and governance during COVID-19 were also covered.

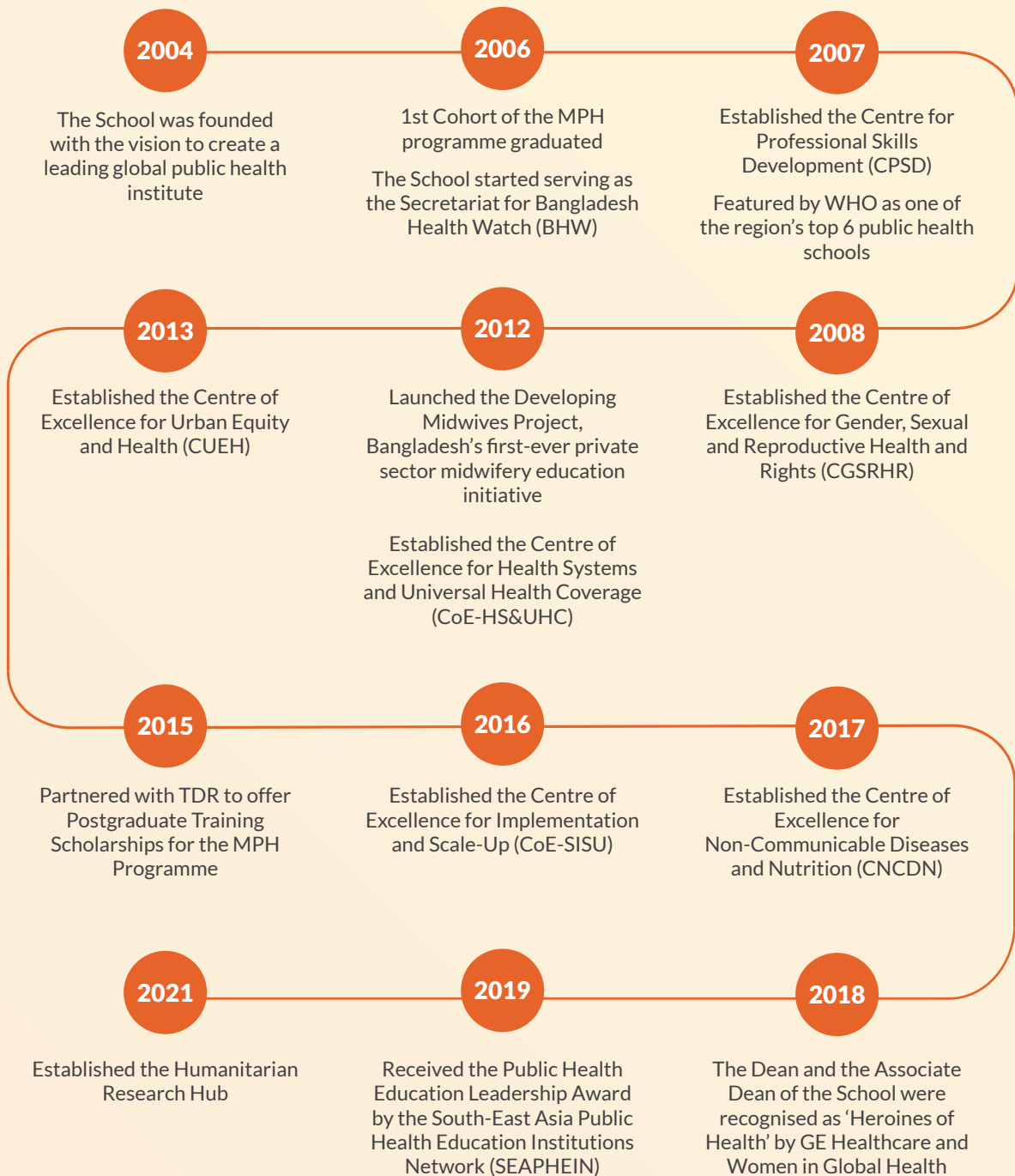


Scan the QR code to learn more about Bangladesh Health Watch (BHW)

For any additional queries or information, please contact:

[jpgsph.comms@bracu.ac.bd](mailto:jpgsph.comms@bracu.ac.bd)

# The School's Journey at a Glance



## BRAC James P Grant School of Public Health

6<sup>th</sup>, 7<sup>th</sup> & 9<sup>th</sup> Floor, Medona Tower, 28 Mohakhali Commercial Area,  
Bir Uttom A K Khandakar Road, Dhaka - 1213, Bangladesh.  
Telephone: +880-2-48812213-18 | Email: [jpgsph.comms@bracu.ac.bd](mailto:jpgsph.comms@bracu.ac.bd)  
[www.bracjpgsph.org](http://www.bracjpgsph.org)



Access our newsletters  
and publications