

2020-21

Master of Public Health

Student Handbook

BRAC James P. Grant School of Public Health

TABLE OF CONTENTS

WELCOME	3
ABOUT THE BRAC JAMES P GRANT SCHOOL OF PUBLIC HEALTH	3
EDUCATION	4
TRAINING	6
RESEARCH.....	6
ADVOCACY	8
GLOBAL RECOGNITION	9
MASTER OF PUBLIC HEALTH (MPH) PROGRAMME	9
ACADEMIC PROGRAMME.....	13
EVALUATION AT JPGSPH.....	16
GRADUATION	20
MPH AWARDS: POLICY AND PROCEDURES	22
LEARNING RESOURCES.....	24
SEXUAL HARASSMENT POLICY AT JPGSPH.....	28
MPH TEAM	29
GUIDE TO DHAKA	32

WELCOME

Hello and a warm welcome to you from the BRAC James P Grant School of Public Health (BRAC JPGSPH) at BRAC University!

We are happy that you have chosen to join our community. A rich educational, professional and interpersonal experience awaits you here. We are confident that your presence will enrich the global classroom of learners at BRAC JPGSPH.

This handbook intends to provide information useful to students on issues related to student life (accommodation, meals, and classes), academic policies of the school (examinations, grading, and fieldwork) as well as expected standards of behaviour. It is subjected to revision and changes, which will be notified to students in writing.

As an enrolled student, the faculty member looks forward to interacting with you on a regular basis and making your experiences from orientation to graduation smooth, unique, enjoyable and rewarding. To that end, we will do our best to respond to your needs and concerns in a timely and professional manner. Our hope is that you will work with us in helping to ensure that your experience at BRAC JPGSPH is well rewarding..

We hope you appreciate and understand the diverse community of backgrounds and outlooks that comprise BRAC JPGSPH. We hope you take the opportunity of leveraging this settings of culturally diverse group of learners and continue to develop yourself as a global citizen of knowledge based society. We welcome your feedback and encourage open and productive dialogue that brings out positive changes.

ABOUT THE BRAC JAMES P GRANT SCHOOL OF PUBLIC HEALTH

BRAC James P Grant School of Public Health (BRAC JPGSPH) was founded in August 2004 in Dhaka, Bangladesh to address the unmet public health challenges particular to Asia, Africa and South America. The School was named after late James P Grant (1922 – 1995) who was one of the most distinguished executive directors of UNICEF, credited with mobilizing resources to launch the child survival and development revolution that saved the lives of millions of children throughout the developing world. His legacy is the demonstration of the power of the application of the art and science of public health. Jim was a good friend to Bangladesh and to BRAC.

In realizing that developing country public health needs required immersive, community based teaching and learning to provide locally innovated research and sustainable health solutions, the School was co-founded by:

BRAC, the world's largest NGO, reaching over 100 million people in Bangladesh and working in 10 countries in Africa and Asia.

Icddr,b, a leading international health research institute, which fosters innovation in the

development and delivery of global life- saving solutions.

BRAC University, a premier higher education and development research institution.

Vision: To be the leading global public health institute for the world's critical health challenges affecting disadvantaged communities.

Mission: To create innovative public health leaders and solutions through cutting-edge, experiential **Education, Training, Research and Advocacy**.

The School draws from Bangladesh's remarkable public health achievements as well as BRAC Health's nationwide services and BRAC International's Health programmes in South Asia and Africa. BRAC JPGSPH, therefore offers unparalleled real-life, community-centric teaching, learning and research experiences on critical and emerging national and global public health challenges.

The School applied an interdisciplinary integration of Education, Training, Research and Advocacy to diverse health challenges such as Maternal & Reproductive Health, Nutrition, Gender Equity, Sanitation, Non-communicable Diseases, Urbanisation and Climate Change. Thereby, BRAC JPGSPH is in position to lead and innovate public health learning, investigation, policy and implementation.

The School builds capacity by preparing individuals to become public health leaders, practitioners, critical thinkers, researchers, advocates, and stewards of public health and policy at local, national and international levels.

EDUCATION

MASTER OF PUBLIC HEALTH PROGRAMME

In January 2005, JPGSPH initiated its flagship Master of Public Health (MPH) Programme with the aim of developing public health leaders. The MPH offers:

A global classroom of learners with diverse disciplinary and professional backgrounds; the School features over 467 graduates across 29 countries;

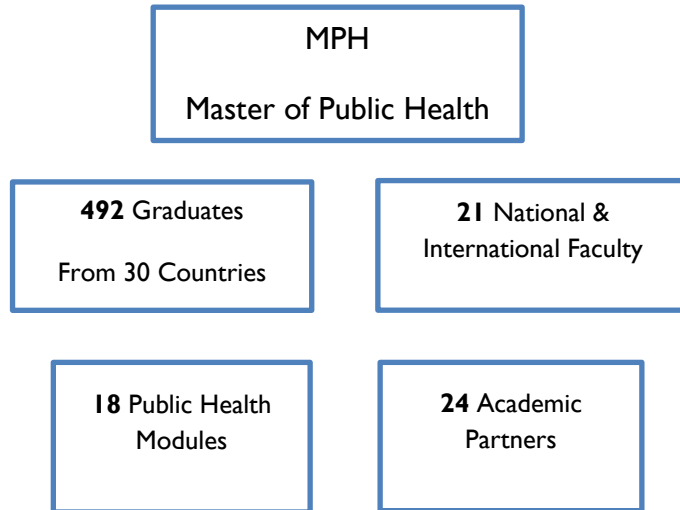
World class faculty from prestigious national and international institutions, who are leaders in their field with country- country expertise, engaging in cutting edge public health salutations and challenges;

Experiential community-immersive approaches exposing learners to multifaceted aspects of developing country health environments and service delivery;

Innovative teaching and learning methodologies embedded in a 21st century public health demand driven curriculum, using collaborative project based learning, facilitated peer exchange and integrative global and local case study methods;

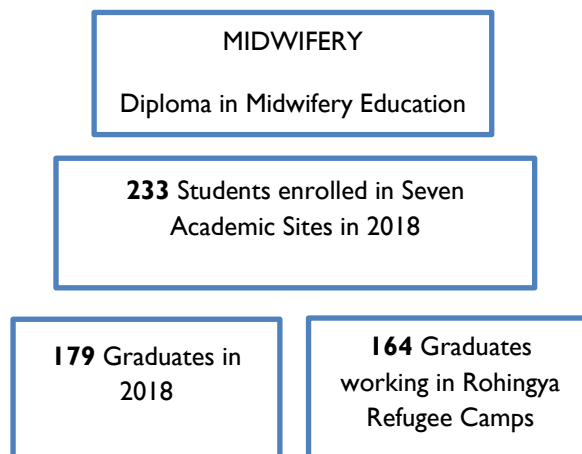
Multi-stakeholder engagement with government ministries, NGOs, bi-lateral partners, public health practitioners and leaders;

Employable professional skills to critically reflect, interpret research, problem solve, and find solutions to pressing and emerging public health needs.



MIDWIFERY EDUCATION PROGRAMME

The Diploma in Midwifery course aims to develop competent and compassionate midwives, to reduce maternal and neonatal mortality, and promote family planning in Bangladesh. The goal of the 3-year diploma course is to produce Midwives who will be able to provide respectful maternity care to the mothers specially in under-served communities and in the rural areas of the country.



CENTRE FOR PROFESSIONAL SKILLS DEVELOPMENT IN PUBLIC HEALTH (CPSD)

The Centre offers unique and innovative pedagogic methods with interactive discussions, experiential learning exposures, community and facility visits, multi-media engagement, role-playing, and other forms of hands-on practical learning.

CPSD provides critical courses on quantitative and qualitative research methodologies for improving the capacity of programme and project implementers. CPSD also offers fundamental skill-based courses on monitoring and evaluation, and workshops on scientific writing skills. Various courses are also offered by the School in partnership with our Centres of Excellence, according to their areas of focus, giving participants the opportunity to learn from experts across the fields of gender, sexual and reproductive health and rights; health systems and universal health care; urban equity; implementation science and scale-up; and nutrition and non-communicable diseases.

We feature a diverse range of expert facilitators/trainers including public health practitioners, medical professionals, anthropologists, health economists, ethnographers, statisticians, development practitioners, policy makers, program managers, and academics from well-established international institutions and national institutions. This ensures the skills provided in these short courses are practical, grounded and speak to the current needs in the health sector.

Our trainings include a wide range of participants including government officials, medical doctors, senior health education officers, senior staff nurses, statisticians, NGO sector specialists, development practitioners, programme officers and managers, academics, researchers, activists, journalists and individuals from marginalized communities.

20 SHORT COURSES, SEMINARS AND WORKSHOPS IN 2018

100+ SHORT COURSES, SEMINARS AND WORKSHOPS TO DATE

320 HEALTH AND DEVELOPMENT PROFESSIONALS TRAINED IN 2018

5300+ PROFESSIONALS TRAINED TO DATE

50 NATIONAL AND INTERNATIONAL TRAINERS IN 2018

320 + GLOBAL TRAINERS TO DATE

RESEARCH

The School is involved in a wide range of research projects. Our projects related to health encompasses urban and rural health, infectious diseases, non-communicable diseases, nutrition, maternal and child health, sexual and reproductive health, health workforce, health equity and

health financing, surveillance, program evaluation, and implementation science.

Areas of research related to gender and SRHR areas include sexuality, violence against women and children, vulnerable populations. Apart from the abovementioned, the research areas also include financial inclusion, poverty alleviation, education, skills development, climate change, migration, and human rights. The School is also taking forward studies on Rohingya refugees through qualitative research, surveys and impact studies since 2017.

There are 71 national and international research institutions that have partnerships with the School. The School has undertaken around 90 research projects from 2004 to 2018; many of which are multi-country consortia in collaboration with leading academic and research institutions. There are also national projects in partnership with local NGOs, local representatives of International NGOs, UN bodies and relevant Ministries of the Government, for projects in partnership with leading public and private academic and research institutions.

Most of the research is located at our Five Centres of Excellence (CoE) on:

Gender and Sexual and Reproductive Health and Rights, established in 2006, focuses on research, capacity building and advocacy work on bodily rights and integrity, sexuality and reproductive health.

Universal Health Coverage, established in 2012 is working towards evidence-informed, equitable and sustainable action towards universal health coverage and the broader health systems.

Urban Equity and Health, established in 2013 focuses on inter-sectoral research, training, policy and results based action focused on health equity challenges of the urban poor, with a particular emphasis on urban health governance.

Science of Implementation & Scale-up (SISU), established in 2016 focuses on existing programme evidence to innovate, strengthen and improve service delivery execution and scale-up proven interventions.

Non-Communicable Diseases and Nutrition (CNCDN), established in 2017 aims to reduce mortality and complications related to NCD and malnutrition in Bangladesh through prevention, treatment and control.

RESEARCH

34 NATIONAL AND INTERNATIONAL
RESEARCH PROJECTS IN 2018

OVER 90 RESEARCH PROJECTS TO DATE

**53 RESEARCH ARTICLES PUBLISHED IN
2019**

OVER 600 ARTICLES PUBLISHED TO DATE

105 DONORS & PARTNERS IN 2018

**143 TOTAL DONORS AND PARTNERS TO
DATE**

ADVOCACY

With a strong academic integrity, a focus on research, and as leaders in public health both in Bangladesh and globally, the School believes in advocating for change in policies and working closely with stakeholders to push agendas that are of critical national and global importance. We aim to foster better and healthier lives through evidence-based research which can inform policymakers, practitioners and programmes/interventions for vulnerable communities. We strive to collaborate closely with key stakeholders, including communities, development practitioners, NGOs, INGOs, government and other key policymakers, and with global research and service delivery organizations, when advocating evidence that will improve health outcomes for the disadvantaged.

All research projects undertaken by the School have policy and advocacy as part of their key mandate. The aim of the five Centres of Excellence are to translate research knowledge into action through influencing policies and diverse actors. Research uptake is undertaken by various means, through both formal and informal channels. These include, organizing different critical platforms of national importance through partnering with key stakeholders for hosting high level meetings and dialogues with government, organizing seminars, and disseminating advocacy activities through media and radio channels, blogs, and policy briefs. The School hosts an independent national group – Bangladesh Health Watch, established in 2006, whose mission is to monitor the state of citizen’s health each year, and publish a report on various public issues of national and critical importance.

The School’s policy and program-based advocacy efforts are directly informed by research on existing and emerging critical public health challenges in Bangladesh and the region. A key area of implementation science is to bring researchers and policymakers together to make programmatic changes to influence policy and engage in reform. Some examples of our advocacy work include ensuring universal health coverage, holding policymakers and influencers accountable on health sector reform, breaking the shame and taboos around gender and sexual and reproductive health and rights, sexuality, bodily rights, and pushing the urban health to the forefront of the country’s health policy agenda. Another current prime focus at the School is on emerging advocacy on non-communicable diseases and nutrition, particularly adolescent girls.

ADVOCACY

750 + STUDENTS REPRESENTING THREE MAJOR UNIVERSITIES ATTENDED THE 'GENDER AND SEXUAL & REPRODUCTIVE HEALTH CONFERENCE FOR YOUNG ADULTS' IN 2018

200+ ADVOCACY-BASED EVENTS WITH MULTI-STAKEHOLDER ENGAGEMENTS

14 ADVOCACY-BASED EVENTS THROUGH MULTI-STAKEHOLDER ENGAGEMENTS IN 2018

GLOBAL RECOGNITION

Medical Award of Excellence 2017: BRAC JPGSPH Advisor & BRAC Vice-Chairperson, Dr Mushtaque Raza Chowdhury has been awarded 'Medical Award of Excellence 2017' by the American non-profit Ronald McDonald House Charities along with a grant of USD 100,000 in recognition of his outstanding contributions in the field of primary health care and community-based education across developing countries <http://www.brac.net/latest-news/item/1103-brac-vice-chairperson-awarded-medical-award-of-excellence-2017>.

Heroines of Health 2018 Award: BRAC JPGSPH Dean, Prof. Sabina Faiz Rashid and Professor Malabika Sarker, Associate Dean were awarded 'Heroines of Health 2018 award' at the 71st World Health Assembly in Geneva by GE Healthcare and Women in Global Health in recognition to her commitment and achievements in global health <http://newsroom.gehealthcare.com/meet-the-two-professors-working-together-to-improve-the-lives-of-vulnerable-populations-in-bangladesh/>.

The 2006 Prince Mahidol Award: Dr. Richard Cash, Professor, BRAC JPGSPH & Senior Lecturer on Global Health at Harvard T.H. Chan School of Public Health was awarded the 2006 Prince Mahidol Award for "exemplary contributions in the field of public health" in recognition to saving millions of lives by promoting the use of oral rehydration therapy to treat cholera and other diarrheal diseases. (<http://www.princemahidolaward.org/laureate-bio.en.php?type=ind&id=2006-11-22%2006:29:42>)

World Health Organization 2007: The World Health Organization, in its December 2007 Bulletin, featured the BRAC JPGSPH as one of the six schools in world in promoting and practicing innovative higher public health education. (<http://www.who.int/bulletin/volumes/85/12/07-021207/en/>)

WHO TDR Selection 2015: In 2015, BRAC JPGSPH was selected as one of the seven global academic institutions to implement World Health Organizations' TDR (The Special Programme for Research and Training in Tropical Diseases) International Postgraduate Training Scheme on Implementation Research

(http://www.who.int/tdr/news/2015/7_universities_selected/en/).

Asia-Pacific Academic Consortium for Public Health Membership: BRAC JPGSPH is a member of Asia-Pacific Academic Consortium for Public Health (<http://www.apacph.org/wp/members-list/>).

Consortium of Universities on Global Health (CUGH Membership): The Consortium of Universities for Global Health (CUGH) is a rapidly growing Washington, DC based organization of over 170 academic institutions and other organizations from around the world engaged in addressing global health challenges. CUGH was established in 2008 with generous funding from the Bill & Melinda Gates Foundation and The Rockefeller Foundation. The BRAC JPGSPH became full associate member of CUGH in 2019.

MASTER OF PUBLIC HEALTH (MPH) PROGRAMME

BRAC JPGSPH was established with the aim of having a world-class, public health programme. Launched in 2005, our MPH programme strives to produce public health leaders who “think out of the box.” By exposing them to the myriad of public health challenges in disadvantaged communities, we prepare them to actively work towards finding local and global solutions. With its “field-to-classroom” philosophy, the School moves away from the traditional pedagogical approach to public health and provides an education unlike any other.

Innovative teaching and learning methodologies are embedded in a 21st century public health demand-driven curriculum. We apply a range of pedagogy methods, including extensive field exposure, collaborative project-based learning, integrative global and local case study methods, and facilitate peer learning.

Our MPH programme attracts a diverse portfolio of students from all round the world. They range from health and development practitioners, social scientists, government officials, policymakers, doctors, dentists, nurses, management experts, and researchers.

Multi-disciplinary faculty with years of experience from global and national reputable institutions contribute regularly as coordinators of modules and as visiting lecturers. This ensures that our MPH curriculum is practical, based on real life learning, and focused on finding solutions for

complex challenges. The School's faculty and researchers create an integrated learning environment. They incorporate emerging and existing research findings in classroom discussions, keeping the MPH courses relevant and grounded. Leading the way in creating a new generation of public health champions and advocates, our MPH programme has brought about significant impact in Bangladesh and beyond.

Experiential Community-Immersive Approaches

The locus of BRAC JPGSPH's MPH is its Experiential Community-Immersive teaching through rigorous urban and rural fieldwork. By embedding learners directly in the multi-faceted aspects of developing country environments and health service delivery, students practically investigate and comprehend critical public health realities of disadvantaged communities.

The School employs holistic approaches to understanding health in its physical, mental, emotional and social dimensions. Promoting better health outcomes beyond simply eliminating disease and sickness is integral to BRAC JPGSPH's orientation of public health.

Throughout the year, students undertake collaborative projects in a wide-range of public health settings including informal settlements, BRAC Health programmes, icddr, hospital, NGO clinics and government health services; to develop on-the-ground conceptions of community health and pluralistic health systems.

This unparalleled teaching framework enables students to systematically develop the values, vision and community-centred ethos required for sustainable public health impact.

Global Public Health Faculty and Practitioners

Facilitating this real-world contextual learning are the School's reputed global and national professors grounded in critical public health research, practice and programmes. Students gain insightful practical knowledge and know-how from both faculty engaged in applied public health research informing health programmes and policy; and leading public health practitioners with extensive experience in strategising, designing and operationalising programmes.

In addition, visiting faculty working cross-sectorally in health within the fields of law, business, media, governance, education, etc provide a comprehensive understanding of the complexities affecting health services.

Alongside the core curriculum, the School draws on diverse faculty specialisations and developing world health priorities as global and community health, ethics, applied anthropology, urban poverty, qualitative methods, health programme management, monitoring & evaluation and implementation science.

Community- Centered Public Health Learning Methodologies:

Communities within urban and rural environments; public health stakeholders and institutions; health and development practitioners and researchers; together form the foundational learning praxis for students throughout the year. All the learning methodologies are integrated with this cutting-edge pedagogic model for students to intellectually process and analyse public health realities unfolding in real-time. Our explicit learner-focused approach goes beyond the ‘detached observer’, bounded classroom environment, to compel students to experientially place themselves within the communities alongside the multiple stakeholders and services.

Through such unique learning methodologies students directly encounter the health needs, poverty, service quality and management, health crises, shortcomings and successful interventions embodying modern public health. BRAC JPGSPH thereby inspires students’ innate capacities and potential for authentic engagement, stimulates critical academic reflection and repeatedly challenges students’ limits to holistic perspectives. Thus allowing them to creatively conceptualise, design and simulate implementable solutions to various public health problems.

Fieldwork:

Access to the vast field sites of its institutional partners – BRAC and icddr,b – and visits to 32 other field sites (ie, urban slums, rural areas, district hospitals, programmes run by NGOs) has allowed the School to develop a globally recognised MPH programme. Through structured field visits, students can directly engage with the needs and challenges faced by diverse vulnerable populations. Speaking to programme staff on service provision enables students learn directly about the challenges and successes of running programmes. Critical analytical skills are developed as students learn how to evaluate gaps, problem solve and explore ways on addressing critical health issues

Actively engaging with multi-stakeholders:

Part of the unique learning experience includes engaging with government ministries, NGOs, development and bi-lateral partners, public health practitioners and activists working across diverse sectors. Experts are invited to speak on panels, or students can visit various ministries (ie, National Institute of Population Research and Training, Bangladesh Bureau of Statistics etc.) and other organisations.

Case-Based Teaching & Learning

Thoughtfully designed and developed narratives on specific public health problems are used during collaborative learning and active discussions in the classroom. This approach creates a learning space, which maximises interactions between students, sensitivity to their peers’ responses, and encourages overall critical thinking and a problem-solving learning approach.

Online Learning

All course materials, instructions and pedagogic tools are available for students via Moodle, an online learning platform that offers students greater access to information. In addition, students can access other online course resources to improve their learning.

ACADEMIC PROGRAMME

Curriculum and Course Content & Credits

With the duration of full one year with 51 credits, the courses are designed to encourage a sequential pursuit of public health education:

Course Code	Name of Course	Credits
MPH 501	Introduction to Public Health	2
	BRAC Health Programme Management Learning	
MPH 512	Anthropological Approaches to Public Health	3
MPH 513	Qualitative Research Method	2
MPH 521	Biostatistics	3
MPH 522	Epidemiology	3
MPH 520	Quantitative Research Method	3
MPH 530	Health Systems Management	5
MPH 531	Health Economics & Health Care Financing	2
MPH 670	Public Health Nutrition	2
MPH 620	Epidemiology of Infectious Diseases	3
	Introduction to Implementation Research	
MPH 681	Aging and Health	2
MPH 690	Principles of Health Communications	1
MPH 660	Gender Sexual Reproductive Health and Rights	2
	Government Health Programme Management Learning	
MPH 691	Monitoring and Evaluation of Public Health Programmes	1
MPH 541	Environment, Health and Climate Change	3
MPH 700	Summative Learning Project (SLP)	14

Summative Learning Project (SLP):

Summative Learning Project (SLP) is a guided group project intended to engage and evaluate students in a primary research designed to help them integrate and apply the key competencies learned throughout the MPH course fundamental to public health research and practice. SLP was first piloted in 2014 with 10th batch students at BRAC JPGSPH instead of thesis as partial requirement of MPH degree fulfilment. Since then, this approach has been systematically applied for all batches to develop core competencies of MPH students following several organizational steps.

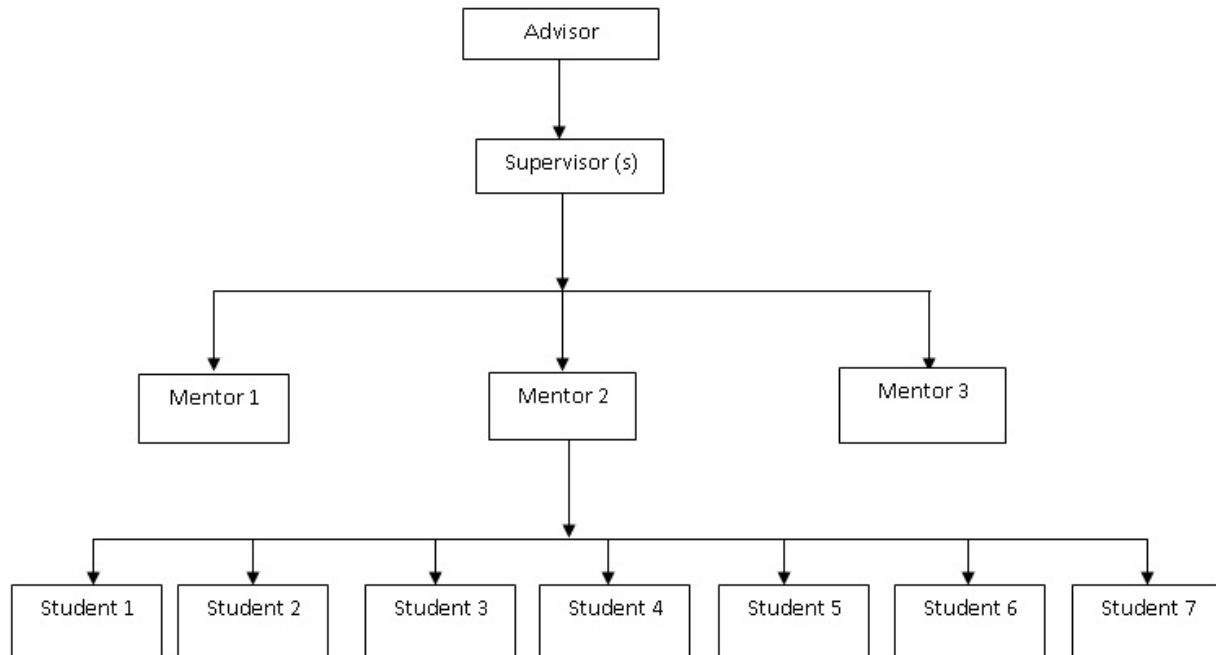


Figure 1: Summative Learning Project (SLP) support structure

The outcome will be an individual SLP Final Report to be submitted in partial fulfilment for the MPH degree. Detailed guidelines for the SLP will be provided later on during SLP Orientation. At the end of their fieldwork, each student submits his/her FINAL REPORT and presents a SLP Group Poster. Selected outstanding SLPs are presented in the Graduation Ceremony, which marks the official end of the MPH Programme where the students graduate.

Summative Learning Project (SLP) Orientation

The SLP orientation provides an opportunity for the students to discuss their Summative Learning Project (SLP) ideas/topics informally with various public health experts and obtain their views. By bringing together students with confirmed supervisors and mentors, the orientation allows the students to engage in discussions in order to further narrow down their future research projects.

Seminar Series

Health and Development related Seminars take place throughout the academic year and exploit the rich resources of international and domestic experts to speak on different issues related to public health. It is mandatory that all students attend these seminars as a part of their learning experience. All students have to be present to share and enrich their knowledge.

BRAC Health Programme Management Learning

This module engages students to apply their Public Health vision, values, practices and community-centred ethos to real-world rural health programme management. Students will now leverage their accumulated community-health learning to practically comprehend the service delivery and related management functions within BRAC Health's Maternal & Neonatal Child Health (MNCH) Programme.

Based in community level field context for one week, the module comprises an intensive 2-part exercise of:

- Community service need-based analysis
- BRAC Health service Delivery analysis
- BRAC Health Staff interviews on how management functions affect services
- Developing simple, innovative solutions to service delivery

Students initially interact with MNCH service-recipient communities to gauge their precise service priorities and needs. They will then observe BRAC Health Programme activities to assess actual service delivery implementation and effectiveness against community expectations. This is followed by interviews with BRAC Health staff to understand how the essential management functions of Human Resources (HR), Communications and Finance contribute to or constrain Service delivery.

Lastly, students critically reflects and actively solve problems on the service implementation challenges to develop simple, innovative and practical solutions for service improvement.

Teaching/Learning Methods

The structure of the teaching programme is problem-oriented employing case study approaches, debates, group work and other forms of learning whenever possible, with a minimum of didactic teaching. Basic knowledge of a subject is provided through an extensive exposure to relevant literature. The course work builds on significant health problems faced in Bangladesh. The problems draw students into problem solving thinking, group work to encourage critical thinking and dialogue with peers. Different modes of presentations of problem analysis ensure that students are working with various forms of communication techniques.

Students are exposed to key concepts, encapsulating scientific, social, and cultural aspects that govern public health policies and practices. In addition, students are highly encouraged to practically apply the knowledge they have gained from classrooms into field-based activities. It is the seamless and constant interchange between classroom and field work that makes the BRAC JPGSPH programme uniquely rich and formative.

Course work is modular, allowing for integrated team teaching and reinforcement with relevant field visits and projects. Teams for each module comprise of an experienced academician, with one or more counterpart teachers from BRAC JPGSPH, relevant adjunct faculty drawn from BRAC, ICDDR,B, other international and/or local institutions, and local practitioners of public health and development. Field trips during course work are frequent and are an integral part of the modules in the MPH. Students work in groups ensuring smooth interaction and

communication with people in the field. This small group model also facilitates effective mentoring sessions with the faculty.

EVALUATION AT JPGSPH

Assignment of Grades

The BRAC James P Grant School of Public Health generally uses a letter grade system for all courses (see below for exceptions). The grading system is largely in accordance with that used by BRAC University. Letter grades are A and B with (+ or – as applicable) and F (Unacceptable performance), I (Incomplete), W (Withdrawal), and R (Retake). The final grade for the course will be based on the assignments and exams given by the course teacher. However, the basis upon which the student will be graded will clearly be articulated by the course teacher at the beginning of the course and will be described in the course syllabus. The grades, their corresponding numeric range, text & GPA are as follows:

Letter Grade	GPA	Numeric Range	Description
A	4.0	≥90	Outstanding Achievement
A-	3.7	89-85	Excellent work, close to outstanding
B+	3.3	84-80	Very Good. The solid achievement expected of most graduate students.
B	3.0	79-75	Good, acceptable achievement
B-	2.7	74-70	Acceptable achievement, but below what is generally expected of graduate students.
F	<2.7	<70	Unacceptable performance for graduate students.

The courses “Introduction to Public Health” & Summative Learning Project (SLP) have pass/ fail grade.

Academic Standing

Students are expected to maintain standards in their academic work i.e. take the requisite number of courses and maintain satisfactory grades (minimum GPA of 2.7). Students have to pass in all courses in the MPH programme. A student who receives an F grade (Below 2.7) in any of these courses will be required to take a retake (or make up) examination. Any retake of exams will automatically be a B-, and this is the grade that will be recorded in the final transcript. If a student fails the retake examination, then the School will review the student’s record and recommend further action that may include several options (e.g. another make up exam, repeating the course, withdrawal from the programme, etc.). Any student enrolled is required to complete the MPH Programme within 3 Years.

MPH Policy on RETAKES

The students must complete the courses in the program in order to graduate. In other words, students must earn 51 credits to successfully graduate with a Master of Public Health degree.

Each individual course has its own examination/evaluation method/process. If a student fails to “pass” an examination, he/she is allowed to re-appear in or retake a subsequent examination as agreed upon by the course coordinator and MPH coordinator. This policy provides a precise guideline and sets procedures to be followed in case of retakes.

Review of examination scripts:

The school shall take responsible steps in a review of examination script request brings into question the accuracy of grades awarded in a course or assessment.

Process:

The student must make the request within 2 days from the date of result publication sending a formal email to the course coordinator with copy to Teaching Fellow and MPH Management team. MPH Management Team and respective TF in consultation with the course coordinator will organize a meeting to explain and clarify the evaluation of the examination scripts. Such arrangement is done to help and encourage continuous learning. School will not accept the review request beyond the mentioned time.

Policy

In evaluating their performance in each course all students must be given equal opportunity to demonstrate their capacity to successfully complete the course. This involves allowing retakes when necessary. However, in allowing retakes, the integrity and the value of the MPH Program must be maintained. In other words, retakes must be viewed as the last resort rather than a “right” to be enjoyed whenever needed.

No student shall be allowed a retake examination in more than five (5) courses. Two retake examinations are allowed in each course.

In case a student fails in two successive retake examinations on the same course, he/she shall not be allowed to continue with the MPH Program. Any issue related to MPH Programme, if required will be consulted in MPH Academic Committee meeting.

The School shall make all efforts to identify student(s) who are likely to face problems in successfully completing their courses and/or would require retakes.

Procedures

In consultation with the Deputy Director/Deputy Coordinator of the MPH Program, retakes are

to be organized and taken by the same instructor/faculty who has taken the original course. Evaluation made by the instructor/faculty is final. The Coordinator of the MPH Program shall keep the Dean of JPGSPH informed of such retake examinations.

Performance Evaluation

The performance of students is evaluated throughout the course through class tests, class participation, quizzes, assignments, and project work and end-of-course examinations. Numerical scores earned by a student are aggregated and converted to letter grades (as described in a later section). Each student is responsible for his/her own learning, including self-assessment of knowledge and skills, and is prepared to seek further assistance and guidance in meeting the highest possible standards. Evaluation of both process and outcomes is continuous and communicated to students and teachers. The course coordinator is expected to explain the relative weight of grading procedures on the first day of each course, which will also be provided in writing.

Depending on individual course instructor's design of the course, written assignments and examinations may be shared with students to see their own work to enable continued learning from these experiences. While clarification may be sought, there will be no revision of grades given and no recourse to comparison with other students' work unless there are exceptional circumstances. A student who is dissatisfied by a course grade received can seek clarifications from the course instructor. While JPGSPH realizes that their score sometimes concern students, we urge students to take a longer-range perspective, deriving satisfaction from the insights, knowledge and skills obtained and not become overly "grade conscious".

Evaluating What You Think of Our Teaching

At the end of each course, students will be asked to participate in an anonymous evaluation of both the faculty who taught and the course itself. These will be processed by the administration and communicated to the concerned faculty to allow improvement both in teaching and course content. The assessment is confidential. Just as we assess you, we want you to evaluate us. A series of quantitative & qualitative methods are used to get your feedback. The process takes only a few minutes and enables us to improve on what we are offering.

Examination Policy Guidelines

All students are expected to take all examinations. No books (unless so stipulated), notes, or mobile phones are allowed inside classroom, except in case of emergency (where the TA will be notified). Only in emergency situations, a student may keep the phone but with the ringer in lowest volume. Sending and receiving SMS is highly discouraged between exams and may be considered as cheating. Calculators can be used. Students are allowed to take bathroom breaks one at a time. Any student caught cheating or abetting other students to cheat will have his/her exam papers immediately confiscated and will receive a 'Fail' grade in that examination. He or she may sit for a separate re-take for that particular module and will receive only a B- (any retakes for a course module results in an automatic B-, irrespective if the final grade is higher).

Attendance Policy

Courses are offered as modules and the entire content of the course is given during a stipulated time. Hence, students are expected to attend all classes and related activities on a timely basis. Coming late to classes is disrespectful towards staff and students and hence is strongly discouraged. Three late shows (more than 10 minutes each time) will be counted as a one-day absence. Students who are absent for more than 30% of the classes will not be allowed to sit for the final examination and may fail the course. To enforce this policy, the Teaching Assistant will monitor attendance (both in the morning and in afternoon classes) and an attendance sheet will be submitted by the TA to the Coordinator at the end of each course. Students may also be required to submit additional homework evaluations (exams, writing assignments) if they miss class. A student is only allowed to miss more than 10% of classes if he or she is ill and requires hospitalization, or if there is sudden emergency or tragedy in the family. A student must seek permission from the course instructor and MPH Coordinator before he or she takes a leave of absence of more than 10% and the course coordinator has to agree to a make up for the student.

Field Visits

As part of the experiential learning process, students will regularly go for field visits as an integral part of their course, to villages and urban slums (usually in groups) to visit communities and health facilities and different institutions to learn from their programmes and interventions, relevant to the ongoing course. Attending field visits is mandatory for all students.

Seminar, Presentation & Written Assignment

Students will regularly prepare themselves for seminar and presentation especially after field visits or project assignments, individually or in groups, as decided by the course instructor. Students are advised to prepare their seminars and presentation in PowerPoint and submit a copy to the academic leader during the respective course.

Withdrawal

This is assigned to a student who withdraws from the course within the deadline for withdrawal with W record. In case of withdrawal, students benefiting from scholarship support must reimburse BRAC University the total cost of the course. Exception to this rule can only be made on medical grounds and on terms and conditions imposed by the University.

Academic Integrity/Plagiarism

The following standards relate to all work prepared for evaluation by course instructors (i.e. homework, take-home exams, in-class examinations, presentations, papers etc). Students are required to submit such work for evaluation for various reasons:

- To help the students develop and cogently express concepts, knowledge, and skills to

inspire creative thinking and work.

- To provide the instructor with feedback revealing whether or not students grasp the material presented.
- To provide a record of the student's progress.
- To promote the learning of new material and to reinforce old material.

Exchanges among students are invaluable, especially in a school where diversity of backgrounds and experience are so rich and varied. Nevertheless, these guidelines emphasize the need for attributing credit and for doing independent work when required by the instructor.

All work submitted are expected to be students' own work. In the preparation of work submitted to meet the course requirements, students should always take great care to distinguish their own ideas and knowledge from information derived from varied other sources. Whenever ideas or facts are derived from a student's reading and research, the sources must be indicated. The term "sources" include not only published primary and secondary material, but also information and options gained directly from other people. The responsibility for using the proper forms of citation lies with the individual student. Quotations must be placed within quotation marks, and the source must be credited. All paraphrased material also must be completely referenced.

A computer paper written to satisfy a course requirement is expected to be the original work of the student submitting it. Copying from another student or from any other source is a form of academic plagiarism and prohibited. As per the policy of the School, students' course deliverables are run through turnitin software for plagiarism check.

The extent of collaboration with others permitted in the completion of assignments may vary depending upon the policy set by the course instructor. Collaboration in the completion of assignments is prohibited unless explicitly specified by the instructor. Students must acknowledge any collaboration and its extent in all submitted work. This requirement applies to collaboration on editing as well as collaboration on paper composition.

Unless otherwise specified, take-home examinations are given with the understanding that students may consult notes and references, but not other students. Students who submit work either not their own or without clear attribution of its sources may be subject to disciplinary action including the possibility of being required to withdraw from the school.

Students cannot recycle papers already submitted and checked by professors in other courses. That is, students are expected to submit new papers as specified by their faculty for each course. The same paper cannot be submitted for another course unless prior written permission is attained from the course instructor. A student who submits the same or similar work for another course without such prior permission may be subjected to disciplinary action including possibility of being required to withdraw from the school.

Academic Misconduct Policy and Guidance

Introduction

Cases of alleged or identified Academic Misconduct will be managed and deliberated in accordance with this regulations in the spirit of ensuring better learning environment for all and upholding the academic integrity at MPH Programme. The regulations are designed to ensure that students suspected of Academic Misconduct are provided with an independent and transparent system that is efficient and fair.

Academic Misconduct

Academic misconduct is any action or attempted action that may result in creating an unfair academic advantage for oneself or an unfair academic advantage or disadvantage for any other member or members of the academic community. This includes a wide variety of behaviors such as cheating, plagiarism, altering academic documents or transcripts, gaining access to materials before they are intended to be available, helping a friend to gain an unfair academic advantage or complete individual academic deliverable, and not following the given instruction and protocol in any academic task or deliverable which is considered as a breach of core scientific rigor and ethical practices or trying to create any kind of external influences, pressure, threat that comprises the quality of MPH Programme.

Academic Misconduct Case

In the event or case of academic misconduct alleged by any student or identified by course team or MPH Management team, following procedures are to be followed:

- a) Preliminary Investigation
- b) Academic Misconduct Committee Review

a) Preliminary Investigation

A preliminary investigation will be carried out by a committee formed by the Dean/Associate Dean. The preliminary investigation team will include at least one member from course team at course coordinator/co-coordinator level and one member from MPH Management team at Director/Deputy Director/coordinator level. The committee will look into the deliverable, review materials, undertake hearing from the suspect student, cross-examine with other students or teaching fellow/field facilitator or other relevant persons. Cases relating to a first instance of minor academic practice may be resolved at the Preliminary Investigation stage without the need for an Academic Misconduct Panel.

b) Academic Misconduct Committee

Where cases are not resolved during a Preliminary Investigation level, the Dean/Associate Dean may call for further review by an independent Academic Misconduct Committee. At this level the suspect students will face the Academic Misconduct Panel. The panel will include following 4 members:

- a. The Chair, Institutional Review Board, BRAC JPGSPH
- b. Two Professors at BRAC JPGSPH who are not involved in the course
- c. One external at Associate Professor/Professor Level outside of BRAC JPGSPH

Academic Misconduct Sanctions

The sanctions for Academic Misconduct include the following:

- Retake of the assignment or task
- Retake of the assignment or task with additional task or assignment
- Retake of the whole course in the current academic year
- Retake of the whole course in the next academic year
- Withdrawal from MPH Programme
- Cancellation of studentship from BRAC University

Graduation

All students who have successfully met the criteria to graduate are required to be present at the graduation ceremony having completed required formalities. Graduation normally takes place sometime in late January of the next year.

MPH AWARDS: POLICY AND PROCEDURES

Each year the BARC James P Grant School of Public Health (JPGSPH) gives four awards to its outstanding Masters in Public Health (MPH) students. The awards, in four distinct areas, bear the names of four distinguished highly acclaimed scholars and development leaders. The awards are:

- Allan Rosenfeld Award for Best Academic Performance;
- W.B. Greenough III Award for best individual Report of Summative Learning Project (SLP);
- Professor Richard Cash Award for best SLP Group Poster; and
- Sir Fazle Hasan Abed Award for Leadership.

Distinction Award (students who achieve an impressive grade point average of 3.80 or above will receive Distinction awards, in recognition of their performance in modules throughout the year.

All Awards are declared at the Graduation Ceremony to be held at the end of the MPH Program organized by the James P Grant School of Public Health. The awards are described below.

Allan Rosenfeld Award for Best Academic Performance

Policy:

The award is exclusively for academic performance. The MPH student with the highest average score combining all the courses and the SLP shall be the recipient of this award.

Procedures:

In each course, all students are assessed by the Course Coordinator/Instructor. The final score sheet shall be duly signed by the Course Coordinator and submitted to the Coordinator of the MPH Program. Simultaneously, a copy of the score sheet shall also be submitted to the Director of the School Dean.

For each student and for each course, the score sheet must contain an alphabetical value (A+, A, B+, B, C, etc.) along with its numerical value (90-100 for A+, 85-89 for A etc.).

All course mark sheets are reviewed and tabulated using the based on the numerical value of the assessment in each course, with the final number totalled to assess best overall academic performance.

W.B. Greenough III Award for best individual Final Report of Summative Learning Project (SLP)

Policy:

The award is exclusively for the best field study from among all final reports produced by the MPH students in a given year as judged by the School.

Procedures:

Each final report is reviewed and assessed by a panel of examiners at the School.. Personal identifiers are removed from final reports before SLP reports are shared with external examiners to ensure fair marking.

The reviewer rates the final reports as per the grading scale followed by the course.

Subsequently, Academic Committee members review the final comments/grades for all these final reports and selects the top rated [outstanding] final report for further consideration of the Award, after narrowing down the choice and identifies the best two or three top final reports.

Professor Richard Cash Award for best SLP Group Poster

Policy:

The award is exclusively for the best poster or posters designed/created by the MPH students in a given year based on their SLP work.

Procedures:

SLP student group shall design/create posters that would effectively present the essential nature and findings of their combined SLP group work.

These posters shall be displayed at the School prior to their formal display during the Award Ceremony. Members of the Academic Committee are invited to review the posters and rate each one on a scale of 0 to 10 (ten being the highest quality).

The review of posters continues for several rounds as they narrow the list, until a winner is finally selected.

The Sir Fazle Hasan Abed Award for Leadership

Policy:

The Sir Fazle Hasan Abed Award is to recognize the MPH student who demonstrates best leadership qualities throughout the year as judged by his/her fellow students.

Procedures:

During the last week of class (prior to the start of the independent field work), students will be given individual ballot papers each containing the name of one student up to the total number in the year. Students will be asked to rate each of these on a scale of 1-10 (10 being the highest rated) for each student in terms of leadership qualities demonstrated throughout the year. The student earning highest marks will receive the Sir Fazle Hasan Abed Award for Leadership.

Leadership qualities to be considered include, but are not limited to, helping/assisting others in case of need; actively participating in the class; organizing/leading social/cultural events; accepting, understanding and celebrating cultural diversity in the class; being sensitive to the cultural/social values of others; demonstrating in words and in action respect to the principles of gender equality and universal human rights; and respecting in words and in deeds the individual freedom of all in the MPH Program – students and teachers and teaching assistants alike.

Once marked, students shall hand their ballots over to the MPH Coordinator of the School. All of the awards are announced at the final Graduation Forum.

LEARNING RESOURCES

Library

Students have access to BRAC University Ayesha Abed Library in Dhaka Campus. There are 17,000 titles of books in the Dhaka and a digital library which offers access to more than 10,000 titles of online journals on health and development field through its access to HINARI, MEDLINE, JSTOR etc.

The School can organize access to to the library at ICDDR, B, which has about 45000 titles of books and bound journals. It has subscription to about 173 print journals. It has online access to more than 20,000 titles of journals focused on health and medicine. In all libraries, there are reference sections, reading rooms and borrowing facilities for books and journals. The dormitory also offers wireless internet connection. In Dhaka, the School provides a dedicated computer lab during class hours. In the Dhaka dormitory, each student works on his/her own computer with 24 hour internet connections. There is a dedicated IT professional for students' assistance at specified times.

However, everyone must abide by the guidelines (rules & regulations) supplied by both the

libraries. Please check with the library time schedule as it is often subject to change.

Seeking Academic Advice or Help

If you have a problem in understanding and/or following a particular course, please contact the School or the Course Coordinator or the concerned Teaching Fellow or Deputy Programme Coordinator. Telephone numbers and the email of each member of the core faculty are given. **(See annex. list of staff roles and responsibilities to follow up accordingly)**

Office Hours of the School

These are from 9.00 am to 5:00 pm Sunday through Thursday. However, in case of hartal or blockade or any other uncertain security situations class time may change. In such event students will be communicated earlier and further action points will be advised, with office hours and class hours revised. All students are expected to attend classes unless advised otherwise.

Class Representation by Student Leaders

Two leaders, one academic and one community, will be selected by the students to carry on the following responsibilities for each module. Responsibilities will rotate among the students.

Academic Leader

Maintain a liaison with the respective course teacher during their assigned period and distribute notices & different course presentations to the students as and when required. Assist the course teacher in organizing different field and group activities.

Community Leader

Maintain liaison with the administrative manager of Niketan BLC and Teaching Fellow and relevant person with regards to transport, fieldwork issues. For academic and social issues please contact Teaching Fellows of the module and MPH team members

Who to Contact with for What

The JPGSPH maintains an issues specific contact point matrix for the students- that helps students identify Who to Contact for What. The matrix is available on the students' notice board before the class room I. However, for any emergencies, the academic or Social leader can contact the MPH team members.

Staying in Bangladesh

I.D.

Each student will be issued an I.D. of BRAC University. Students are advised to carry their ID card at all times. A separate ID card will also be provided to enable access BRAC University Library.

Accommodations

Accommodation in shared room will be arranged at BLC Niketon, Gulshan I only for residential students for the academic year. Residential students are required to abide by the rules of dorm.

Meals

Meals are provided to residential students only. Breakfast is served between 7:30 am to 9.00 am. Lunch is served between 1:00 to 2.00 pm while dinner is served between 8:00 pm to 9.00 pm. **Tea can be bought from the cafeteria (when available) during lecture breaks (morning and afternoon) upon collecting tokens. Non-residential students are meant to arrange their lunch during the class day on their own.**

Cleaning and Laundry

Room cleaning and other living facilities will be taken care of by the service staff at Niketon, however, laundry services will only be provided to students on payment. The School will NOT cover any costs for laundry.

Spouses/Guests

Spouses and guests of the students are welcome to visit them in Niketon dormitories but any guests are not allowed to stay overnight. Guests other than spouses are encouraged to meet in the lobby area/waiting area or dining area of the dorm.

However, if for any urgent reason, a guest decides to stay with the students in the dorm, permission needs to be taken from the School. Decision will depend on the logistic situation of the dorm. Students are required to reimburse the School the cost of the accommodation and meals of the guests.

Local transport

The School will organize transportation for only field trips and other locations connected to learning activities. Transportation from and to the airport for international students will also be provided when they first arrive in Dhaka, Bangladesh. When they graduate or if they depart for visits to their home country, they are expected to manage their own transport to the airport. Renting of cars is permissible but the student need to inform the MPH team members ahead of time. Upon payment received, a car can be rented to drop off the students to the airport.

In addition, there will be car services only for students living in Niketan to be picked up and taken to class and back as part of the residential facility. All non residential are expected to make their own way to class and back and be punctual in attending class lectures. If students do not avail of the car during the allotted periods, they are required to make their own way to campus and any late attendance will accrue demerits in grades (see earlier policy on attendance). However, if classes are very late (beyond 7.30 pm) then arrangements will be made to drop all students, if required, including Bangladeshis to designated areas, so they can reach home safely.

Vacation

A total of 2 to 3 weeks' vacation interspersed between courses. (For dates, see the academic calendar). International students may travel to their country during the vacation. However, they are responsible for their own safety and security and will be expected to cover all such travel expenses and notify the school in advance. They need to ensure they will have the required visas for travel back and forth from Bangladesh and arrange their own transport to the airport.

Visa

Students are required to inform Mr. Sohel Rana, Assistant Manager, Administration **at least eight weeks ahead** of visa expiry date, so that the necessary paperwork can be completed on time and students can continue with their studies uninterrupted. However, transport cost for visa renewal visit at BDT 1000 per visit will be applicable for the students. Any additional cost required in visa renewal must be borne by the student.

Medical Emergency

In case of any health related emergencies, students must need to inform the school. In case of any acute illness and medical emergency, the School will ensure that residential students are sent to the appropriate hospital and or clinic as required as much as is feasible. Please contact MPH team members in case of emergency situation and advice on closest health facility. All costs including related transportation cost will be borne by the student.

Time Table

Each student will be given a timetable/course calendar for each course unit. Any changes will be notified through the Student Leaders and or the MPH Deputy Programme Coordinator.

Change of Address/ Contact Person / Telephone Number

Students are expected to inform JPGSPH office for any change in address and/or contact information.

MPH Class Photograph

A photograph of the class will be taken towards the end of the academic year.

Additional Information

Monsoon in Bangladesh is accompanied by heavy rain and students will find it useful if they keep umbrellas, gumboots (or rubber shoes) with them.

Students are advised not to drink tap water, whether in Niketan dormitory facilities or outside and protect themselves from environmental threats such as mosquito bites. Please use a mosquito net in your room and avoid eating on the beds to avoid ant bites.

Sexual Harassment Policy at BRAC JPGSPH

The BRAC JPGSPH follows its own policy on Sexual Harassment Policy and Safeguarding Policy. The MPH Deputy Director and Assistant Coordinator, Administration and Students Affairs should be informed immediately of any incidents involving sexual harassment.

Rules to abide by

Students should strictly abide by the following codes of conduct:

- The school has zero tolerance for sexual harassment and assault.
- Students should by no means express any sign of discrimination regarding gender (including sexual harassment), age, race, nationality, religious or political beliefs, ethnic origin, physical disability and sexual orientation during their interaction with fellow students or others in their surroundings.
- Discrimination regarding gender (including sexual harassment), age, race, nationality, religious or political beliefs, ethnic origin, physical disability and sexual orientation against any student or member of the School community is unacceptable, will be investigated and may constitute misconduct.
- Upon investigation the suspected student if found breaking any of the codes of conduct will be given a first time warning.
- Possession and consumption of illicit drugs and alcohol is strictly prohibited in any residential facility provided by the School.
- BRAC and BRAC University are politically neutral institutions and therefore political activities based on national or international politics are strongly discouraged.
- Students are required to be punctual in attending all sessions in the modules.
- Speak only in English during class, group work, fieldwork or any activities related to modules
- Do not use cell phone, social media and do not exchange messages during sessions.
- Everyone is expected to contribute equally during group work and sessions

- All data shared during module work belongs to the School. Do not try to publish Scientific Article from any group work materials received. You need to follow MPH Publication Policy.

Important Addresses and Telephone Numbers

BRAC James P Grant School of Public Health, BRAC University

5th Floor, (Level-6), icddr,b Building
68 Shahid Tajuddin Ahmed Sharani, Mohakhali, Dhaka-1212, Bangladesh
Phone: +880-2-9827501 - 4 Extension - 6018
Fax: +880-2-8810383

Hospitals

Apollo Hospital, Dhaka
Plot: 81, Block: E, Bashundhara R/A, Dhaka 1229, Bangladesh
9891661-2

United Hospital Limited,
Dhaka
Plot 15 Rd 71 Gulshan Dhaka-1212
8836000

ICDDR,B
Mohakhali, Dhaka 1212
881 1751

For more information, see JPGSPH website: <http://sph.bracu.ac.bd>

MPH Team

Sabina Faiz Rashid
Professor & Dean
BRAC James P. Grant School of Public Health
sabina@bracu.ac.bd

Haowa Mustagfira Esha
Deputy Coordinator
mustagfira.esha@bracu.ac.bd
01711082711

Tahsin Madani Hossain
Assistant Coordinator, Administration & Student Affairs
tahsin.hossain@bracu.ac.bd
01799106195

Fauzul Kabir
Assistant Coordinator
fauzul.kabir@bracu.ac.bd
01799106196

Sohel Rana
Assistant Manager, Administration
sohelrana@bracu.ac.bd
01937029379

Md. Al Mahmud,
Senior System Engineer, IT Infrastructure & Service Management
mahmud@bracu.ac.bd
01777741837

BRA James P Grant School of Public Health, BRAC University

Master of Public Health Programme 2020-21

Academic Calendar (Tentative)

Course No.	Name of Course	Credits	Dates
MPH 501	Introduction to Public Health	2	Jan 25- Feb 06
	BRAC Health Management (BHM) Experiential Learning		Feb 8-13
MPH 512	Anthropological Approaches to Public Health	3	February 16 -24
MPH511	Qualitative Research Methods	2	February 25 - March 12
	Academic Vacation		Mar 13 - 17
MPH 522	Epidemiology	3	March 18- April 09
MPH 521	Biostatistics	3	April 12- May 07
	Methodology Workshop		May 10- May 14
MPH 520	Quantitative Research Methods	3	May 16-21
	Academic Vacation (Eid-ul-Fitr)		May 22-30
MPH 520	Quantitative Research Methods		May 31- June 4
MPH 531	Health Economics & Health Care Financing	2	June 7-18
MPH 530	Health Systems Management	5	June 21- July 16
	Health Systems Management Experiential Learning		July 07- 11
MPH 691	Monitoring and Evaluation of PH Programmes	1	July 19- 23
	Introduction to Implementation Research		July 26-30
	Academic Vacation (Eid-ul- Adha)		July 31- August 6
MPH 620	Epidemiology of Infectious Diseases	3	August 9-27
MPH 690	Principles of Health Communication	1	August 30 -September 3
MPH 660	Gender, Sexual and Reproductive Health & Rights	2	September 6 - 17
	Government Programme Management Learning (GPML-2) Experiential Learning		September 17 - 24
MPH 670	Public Health Nutrition	2	September 27- October 8
MPH 681	Ageing and Health	2	October 11-22
MPH 541	Environment, Health and Climate Change	3	October 25-Nov 5
MPH 700	Summative Learning Project (SLP) Methodology Workshop		Nov 8- 12

	SLP Data Collection, Analysis and Report Writing	14	Nov 14- Jan 10
	SLP Submission		Jan 11, 2021
	Total	51	
	Graduation Ceremony		January 21, 2021

GUIDE TO DHAKA

Hospitals

Apollo Hospitals Dhaka

Plot: 81, Block: E, Bashundhara

Tel: 8845242; Mobile: 01841-APOLLO, 01729-APOLLO, 01195-APOLLO

Ambulance: 9891665

<http://www.apollodhaka.com/>

United Hospital, Ltd.

Plot 15, Road 71, Gulshan, Dhaka

Tel: 8836000, 8836434

Ambulance: 8836444

<http://www.uhlbd.com/>

Labaid Specialized Hospital

Kemal Ataturk Avenue

Dhaka, Bangladesh

+880 1713-091940

Prescription Points

Prescription Point Ltd.(PPL)

H-105, Road-12, *Banani*

Square Hospitals, Ltd.

18/F Bir Uttam Qazi Nuruzzaman Sarak, West Panthapath

Tel: 8159457, 8142431, ER Mobile: 01713377773-5

Ambulance: 8141522

www.squarehospital.com

Police Station & Fire Brigade

Fire Brigade

Headquarters Tel: 9555555, 9556666

Emergency: 199

Dhaka Metropolitan Police

Control Room Tel: 8614300, 9665407

Emergency Tel: 999

Gulshan Branch:

House 119, Gulshan Avenue, Gulshan 2, Dhaka, Tel: 9880234

Dhanmondi Branch:

House 21, Road 6, Dhanmondi, Tel: 8631942

<http://www.dmp.gov.bd/>

Groceries Shopping

Agora

Located all over Dhaka

<http://www.agorabd.com/>

Nandan

Mega-Shop

NWJ (4), Kemal Ataturk Avenue, Gulshan

Tel: 9862637, 9861603

A fresh produce market can be found at the back of Gulshan I market

Shwapno - Departmental Store

Novo Tower, Level - 8 270, Tejgaon I/A,

Dhaka-1208, Bangladesh

Salons & Parlours

Bliss Hair & Beauty

An exclusive salon that offers health and beauty services for women

128, Gulshan Avenue

Tel: 9895192

Total Care

A salon that provides care for both men and women. It specializes in more 'edgier' hairstyles.

House 61, Road 27, Block F, Banani

Tel: 9861581

Nelos Beauty Salon

A beauty parlour that offers services such as manicures, pedicures, facials and massages

Apt 3, Bldg 12-B, Road 55, Gulshan 2

Tel: 9884288

Farzana Shakil's

Farzana Shakil is a well-known beauty expert that has trained in India, Pakistan and Thailand. Her salon offers facials, make-up services and hair styling, among many others.

Gulshan:

House 1B, Road 5, Gulshan I

Tel: 8812215

La Belle

A salon that offers exclusive treatment for women including facials, skin therapy and hair treatments

2nd floor, House 13 A2, Kemal Ataturk Avenue, Gulshan

Tel: 9885850, 8815974

<http://labelledhaka.com/>

Ban Thai

A salon for both men and women that specializes in professional haircuts and styling.

Road-55, House NWF 12/B, 3rd floor, Gulshan 2

Tel: 8819584

Travel Agencies

Travel House Ltd

1st floor ABC House, 8 Kemal Ataturk Avenue, Banani

Tel: 8821726, 8821825

Galaxy Travel International

25 Gulshan Avenue

Tel: 9888055, 9565159

<http://www.galaxybd.com/travel.htm>

BanglaVasha

Rob Mansion, Gulshan Circle-2, Dhaka-1212, Bangladesh

Tel: 8810464, 8810147

<http://www.banglavasha.com/>

Bangladesh Expeditions

<http://www.expeditions-bd.com/>

Money Changers

Several money changers can be found at Gulshan DCC Market
5th Floor, Gulshan DCC Market, Gulshan I Circle

Mobile Services

Note that sim cards are readily available at any teleshop. Topping up credit can be done at most convenient stores- just look for the FlexiLoad banner

Robi

Pre-paid and post-paid options available
<http://www.robi.com.bd/index.php/page/view/94>

Grameen Phone

Pre-paid and post-paid options available
<http://www.grameenphone.com/>

Banglalink

Pre-paid and post-paid options available
<http://www.banglalinkgsm.com/>

Teletalk

Pre-paid and post-paid options available
<http://www.teletalk.com.bd/>

Public Transportation

Public transportation options in Dhaka include the rickshaw, CNG and buses. Public transportation is generally safe, but one should be cautious when travelling after dark. Note that fares tend to be negotiated.

Language & Culture Centres

The British Council

The British Council Bangladesh is a place where one can learn English and be involved in learning and creative arts
5 Fuller Road, Dhaka
<http://www.britishcouncil.org/bangladesh.htm>

The Goethe Institute

The Goethe Institute Bangladesh is a well-known German cultural institute where one can immerse his or herself in German culture such as art and films. Language programs are offered.
Dhanmondi
Tel: 9126525, 9126526
<http://www.goethe.de/ins/bd/dha/enindex.htm>

Alliance Francaise de Dhaka

This is a great place for people who want to learn French or improve their French skills. The centre also has movie screenings

Dhanmondi Location:

26 Mirpur Road, Dhanmondi
Tel: 8611557

Baridhara Location:
House 2, Road 1, Baridhara

Uttara Location:
Plot 15, Isha Khan Avenue, Sector 6, Uttara
Tel: 8915429
<http://www.afdhaka.org/>

Restaurants

Westin Hotel

Plot 1, Road 45, Gulshan 2
Tel: 9891988

Asian

Seasonal Tastes

This restaurant, located at the Westin Hotel, serves a wide range of Pan-Asian cuisine from tandoori chicken to noodles.

Radisson Hotel

Airport Road, Dhaka Cantonment,
Tel: 875 4555

Spice & Rice

Located at the Radisson Hotel, this restaurant serves a wide range of Asian and Oriental cuisine.

Sublime

This restaurant, located at the Radisson Hotel, is one of Dhaka's premier restaurants.
Radisson Hotel, Airport Road, Dhaka Cantonment,
Tel: 875 4555

Korean

Koreana

Koreana is a great restaurant for Korean cuisine. Its specialties include kimchi, bulgogi and kalbi.
Road 136, House 5, Gulshan 1, Dhaka 1212
Tel: 8824044, 9899827, 8829001

Sura

With its table-top barbeques, Sura is a popular place among expats and locals. Specialties include bibimbap, bulgogi and kimchi.
House 2, Road 90, Gulshan 2
Tel: 8821043

Arirang

A great place for Korean-food lovers.
House 3, Road 51, Gulshan 2
Tel: 9896453, 9896460

Japanese

Izumi

With its head chef Nakajimaya Masayuki and his apprentice Aoki Hideo, Izumi is sure to be a treat for all Japanese food lovers.

House 24C, Road 113, Gulshan 2

Tel: 8814429

<http://www.izumidhaka.com/index.html>

UMAI

Umai is a contemporary Japanese cuisine restaurant where you get to experience authentically prepared sushi, sashimi and many more Japanese dishes.

House 8, Road 50, Gulshan-2

Dhaka, Bangladesh

Samdado

Samdado is known for its wide range of sushi, tempura and other Japanese dishes.

House 27, Rd 35 Gulshan II

Tel: 882 8499

Thai

Absolute Thai

Where one can experience Authentic Express Thai food

House No. 52, Road No. 12/A, Block-H, Banani

Dhaka, Bangladesh

Call 01610-500022

Thai Emerald

House 24, Road 2, Gulshan 1

Dhaka, Bangladesh

Call 01766-293935

Royal Thai

This restaurant serves delicious Thai food.

6 Gulshan Avenue, Gulshan

Tel: +88 019 79 333000

Chinese

Golden Rice

This Chinese restaurant is known for its authentic food. The spicy tofu in oyster sauce is a must-

try!

Road 90, Gulshan Avenue

Tel: 9882796, 8810512, 8824464

Bamboo Shoot (Chinese & Thai)

A great place for authentic Chinese and Thai food.

1st Floor, R.M Centre, 101 Gulshan Avenue

Tel: 9888307, 8821497

Indonesian

Sky Room

This charming restaurant offers patron delicious Indonesian food as well as a spectacular panorama view of Dhaka city. Both a la carte and buffet menus are available.

12th floor ABC House, Banani

Tel: 8822648, 882879

Bengali & Indian

Dhansiri

Dhansiri is well-known in Dhaka for serving traditional Bengali food such as biriyani and kebabs.

Plot 32-A, Road 45, Gulshan 2 (Next to the Westin Hotel)

Tel: 9882125, 8851922

Kasturi (Bengali & Indian)

This inviting restaurant is decorated with pottery and antiques in order to portray the essence of Bangladesh. It boasts a large menu of delicious dishes.

House-25, Road-24, Gulshan

Tel: 8818548, 8818549

Dhaba

Famous for its fuchkas

Road 11, Banani

Lucknow

Lucknow brings you authentic Awadhi cuisine from the authentic recipes of the royal kitchens of Awadh.

60 E Kemal Ataturk Avenue, Banani

Dhaka, Bangladesh

Sajna

A great place for Indian food

House 14, Road 11, Banani

Tel: 8811684, 8812458

<http://www.sajnarestaurant.com/index.html>

Heritage

Run by celebrity chef British-Bangladeshi Tommy Miah, this Mughal decor restaurant serves Bangla-fusion cuisine.

House 10, Road 109, Gulshan 2

Tel: 882 0350, 8829359

Malaysian

Satay House

This restaurant is known for its delicious satay items, among other Malaysian dishes. Several Chinese and Thai food items are also available.

House 67/C, Road 11, Block E, Banani

Greek & Italian

Prego

Located at the Westin Hotel, Prego is one of Dhaka's finest Italian restaurants. As it is very popular, be sure to make a reservation.

Don Giovanni's

In addition to serving scrumptious pizzas, this restaurant also serves Italian pastas such as gnocchi, tortellini and cannelloni; and amazing desserts such as tiramisu and mousse di cioccolato

House 22, Road 123, Gulshan I

Tel: 01729098977

Spaghetti Jazz

Known for its inviting decor and jazz music, Spaghetti Jazz serves delicious pastas and pizzas

43 North Gulshan Avenue

Tel: 8822062

Bella Italia

Bella Italia is known for its scrumptious thin crust pizzas, as well as salads, pastas and meat items.

1st floor Richmond Concord, 68 Gulshan Avenue

Tel: 8851479, 9889846

Saltz

This one of a kind seafood restaurant offers patrons various specialty seafood dishes from different countries. Quality is guaranteed as the seafood is either imported or brought daily from a supplier at Cox's Bazaar.

NWF 8, Gulshan Avenue, Gulshan

Tel: 8818351

Steak

Charcoal Steak House

This restaurant is known for its delicious steaks and inviting decor. It serves both buffet and a la carte and is always busy, so be sure to make a reservation.

CES (G)-I Road 130, Gulshan I

Tel: 8861604, 8853012

Spitfire

Spitfire's decor of logs and red colours creates a great ambiance for customers. In addition to its inviting atmosphere, it offers diners steaks made from imported meat, sizzling vegetables and jack potatoes.

Corner of Road 55 and Gulshan North Avenue, Gulshan-2

Tel: 8851930

Mexican

El Toro

The only Mexican restaurant in Dhaka, El Toro is known for serving Sonoran-style food. Its delicious enchiladas and fajitas are a must-try.

House 1/A, Road 138. Gulshan 1

Tel: 02-8852863, 8616343

Vietnamese

Le Saigon

The only restaurant in Dhaka serving Vietnamese food, Le Saigon serves delicate and tasty food that are a must try.

54 Gulshan Avenue, Gulshan 2

Tel: 8820523

Fast Food

Takeout

Get the best burgers in town

House # 93, Road # 6, Block - C, Banani

Dhaka, Bangladesh

Madchef

Serves American (traditional), burgers and creperies

House 6, Road 17/A, Block E, Banani

Dhaka, Bangladesh

Burger King

House # 104, Block # C, Road # 11, Banani

Dhaka, Bangladesh

Nando's

Nando's is known for its delicious grilled chicken and peri-peri sauce.

Road 142 Gulshan South Avenue

Gloria Jean's Coffees Bangladesh

At Gloria Jean's Coffees, selects the world's highest quality Arabica beans, lovingly roasted in their state of the art roasting facilities in Sydney and handcraft each drink in-store
House No. 2B, Block NE(B), Road 71, Gulshan North Avenue, Gulshan-2
Dhaka, Bangladesh

Cafes

North End Coffee Roasters

53 Gulshan Avenue
1212 Dhaka, Bangladesh

Mermaid Cafe

A great place that serves coffee and snacks
House 9, Road 9, Baridhara

Roll Express Cafe

This beautifully decorated place is one where people can enjoy delicious snacks and beverages with friends
House 34, Road 21, Block B, Banani

Bittersweet Cafe

A cosy cafe that offers delicious food.
Road 53, Gulshan I (Behind Weavers)

Dessert

Cold Stone Creamery Bangladesh

America's most popular super premium ice cream brand in Bangladesh and it's a place to indulge your wildest ice cream dreams!
Call 01785-777000

Club Gelato

In addition to offering gelato and various flavours of ice cream, Club Gelato also serves coffee and dessert items such as tiramisu and cheesecake.
Plot-50, Road-II, Block-F, Banani
Tel: 01711545432

tastebud

House 52, Road 12/A, Block H · Banani Model Town
Banani Model Town, Dhaka, Bangladesh

Baskin Robbins

This franchise of the American ice-cream chain is known for its delicious, creamy ice creams and wide range of toppings.
House 98, Road IIC, Banani

Movenpick

This franchise of the Swiss ice-cream chain is famous in Dhaka for its delicious ice cream and deserts. With its cosy atmosphere, this parlour is a great hang-out for sweet lovers. A wide selection of coffees is also available.

121 C, Gulshan Avenue, Gulshan 2
Tel: 9861919

SHOPPING

Books

Words n Pages

A popular, cosy bookstore in Dhaka that has fiction and non-fiction books, magazines, DVDs and toys

25, Gulshan Avenue, Gulshan 2
Tel: 9890832, 8820417

Boi Bichitra

Boi, meaning books. Boi Bichitra has a lot of educational books available.

House 14, Road 108, Gulshan
Tel: 9897258

Antiques

Old Furniture & Metal Crafts

As the name suggests, one can find various antique furniture items and metal crafts

219-20, Gulshan Shopping Centre
Gulshan-I, Dhaka-1212

Fashion

Aarong

Aarong, meaning village fair, is known for its jewellery, traditional Bangladeshi outfits, crafts and leather goods.

Located all over Dhaka

Aranya

A boutique that sells clothing and accessories made from local materials

60/E Kemal Ataturk Avenue, Banani
Tel: 9882542

Jatra

Jatra is known for selling typical Bangladeshi products with a modern twist such as clothing, jewellery and handicrafts

60 Kemal Ataturk Avenue, Banani
Tel: 8826370

Era House

A complete Fashion House in Bangladesh for Women
House-66, Road-10, Block D, Banani
Banani Model Town, Dhaka, Bangladesh

Bashundhara City Shopping Centre

The 12th largest shopping mall in the world, Bashundhara City is a mix of commerce and recreation. The shopping centre boasts brands such as Hush Puppies, HP, and Apple, a food court, and Star Cineplex that shows both English and South Asian movies. One can also find numerous pirated DVD and CD stores
Panthapath, Dhaka

New Market

New Market has the unique feature of being an open market where one can find everything from jewellery and sarees to food items at reasonable prices.
Mirpur Road, Dhaka

Pink City

One can find anything and everything at Pink City, from traditional salwar kameez to tops and designer outfits. It is known for its tailoring shops, which make quality suits and pants for men, and dresses for women at affordable prices. Be sure to bring a sample of material with you.
Gulshan Road
Note that tailors are widely available and cheap in Dhaka. Great material can be found at Chadni, Chawk and Pink City.

Rina Latif Fashion House

A great place for shopping
Road 24, House 33, Gulshan
Tel: 9896120
Reebok

Sports outfits

234, New Elephant Road Dhaka
Tel: 8623095

Puma

Sports outfits.
32, Kemal Ataturk Avenue, F.R Tower, Banani

O2

A fashion boutique known for its modern clothing that has both men's and women's' lines of clothing. Accessories are also available for purchase.
House 30, Road 10B, Block H, Banani
Tel: 8832491

Bata

This franchise of the Swiss-owned shoe company is known for its fabulous men's and women's footwear.

Located all over Dhaka

<http://www.batabd.com/>

Tangail Sari Kutir

This store is well-known in Dhaka for having a large collection of beautiful saris.

143/1 Baily Road, Dhaka

Deshal

One of the many shops located along Road 11 in Banani, Deshal has a great collection of sarees, salwar kameez, and shawls

Cat's Eye

This modern boutique is popular for men's shirts and women's shoes.

Located all over Dhaka

Ecstasy

One of Dhaka's high-end fashion boutiques that sells modern clothing

Located all over Dhaka

Banani Road 11 Strip

This road is known for having a lot of trendy boutiques.

Road 11, Banani

Bazaars

Dhaka is known for its bazaars, where one can find virtually everything at cheap prices. Bongo Bazaar, which is located at Chankharpur near the Dhaka University campus, is known to have designer clothing such as H&M and Zara. Don't forget to bring your haggling skills with you!

Entertainment

Jamuna Future Park

Jamuna Future Park is the largest shopping mall in South Asia, located in Dhaka.

This is also the 12th largest shopping mall in the world with a 7 theatre cinema hall

an outdoor & an indoor amusement park

a food court

a 22 lane bowling alley with karaoke and pool

a spa/gym with 2 rooftop swimming pools

a 120,000 square foot hypermarket

Address: Ka-244, Pragati Ave, Dhaka

Dhaka, Bangladesh

Star Cineplex

A Cineplex located in Bashundhara City Shopping Centre that shows both English and South Asian movies

Panthapath, Dhaka

Fantasy Kingdom

Fantasy Kingdom has been regarded as “bringing a little bit of Disneyland to Bangladesh” as it boasts numerous thrilling and fun rides such as a Ferris wheel, bumper cars and roller coasters
Dhaka-Ashulia Highway
Bangladesh Billiard’s Centre, Ltd.
House 99, Road I I A, Dhanmondi
Tel: 9133600

Blaze Entertainment Lounge & Bar

Located at the Radisson Hotel, this lounge is a great place to enjoy a game of billiards and have a drink with friends
Radisson Hotel
Airport Road, Dhaka Cantonment,
Tel: 875 4555

FuWang Bowling

One will definitely have a good time at Dhaka’s premier bowling alley.
Gulshan I

Parks

Gulshan Ladies’ Park

A great park
Road 63, Gulshan

Concord Heritage Park

Concord Heritage Park includes replicas of architectural and archaeological objects in order to showcase Bangladeshi culture. Other features include a small museum, family rides, a sports zone for children, and a photo gallery
Ashulia, Savar

Baridhara Park

A park located in the residential area of Baridhara.
Park Road, Baridhara

Recreation Facilities

Bashundhara Gold’s Gym

A franchise of Gold’s Gym located in Bashundhara Shopping Complex
Bashundhara City Shopping Complex
Pantapath, Dhaka

Ladies’ Club

An exclusive club for women with various facilities.
36 Eskaton Road
Tel: 9563395, 9563383

Sports Zone

This health club is equipped with modern gym facilities, bowling alleys and pool tables.
5 Mohakhali C/A

Tel: 8818515, 9899519

Kurmitola Golf Club

In addition to its golf course, this lovely golf club has air-conditioned suites, a billiards room, restaurants, a swimming pool and a professional shop.

Dhaka Cantonment, Dhaka

<http://www.kgc-bd.com/>

Tel: 8752520

Radisson Hotel Pool & Health Club

Excellent recreational facilities located at the Radisson hotel

Radisson Hotel

Airport Road, Dhaka Cantonment,

Tel: 875 4555

Dazzle Yoga and Aerobics Centre

This centre is exclusive to women. Its services include yoga and aerobics classes, as well as a gym.

House 14B, Road 95, Gulshan I

Tel: 8826366

Gulshan Youth Club

The Gulshan Youth club has numerous facilities including a basketball court, tennis courts, pool tables and yoga sessions, to name a few.

Road # 109, Gulshan Play Ground, Gulshan

Ratan's Health Club

This exclusive health club was founded by dental surgeon Dr. Syed Ratan. Its facilities include weights, treadmills, a massage parlour, a skin centre and a salon.

6th Floor Navana Tower, House-45, Gulshan I Circle.

Tel: 8813955, 8828854

Embassy Clubs

There are several clubs run by embassies that provide its citizens with excellent gym facilities, tennis courts and swimming pools such as the American Club, the Canadian Club, the British Club, the German Club, the Australian Club and the Dutch Club to name a few. These clubs require membership. Contact your embassy for further information.

American: 8821025-7

Australian: 9881946

British: 8814644

Canadian: 9881208, 8822704

Dutch: 8821892

German: 8881334

Culture

Bangladesh Shilpakala Academy

This academy of fine arts has everything from singing and dancing, to drama and films

Shegun Bagicha
<http://www.bdska.org/>

Chayyanat

Chayyanat is a cultural organization in Bangladesh that was established during Pakistani rule in order to promote Bangladesh culture.

Dhanmondi

Nazrul Institute

Named after the Bangladeshi poet Kazi Nazrul Islam
Mogbazar, Dhaka

http://www.nazrul institute.org.bd/en_index.php

Rabindra Sharobar

The venue for various musical festivals
Dhanmondi

Prabartana

Prabartana organizes various festivals and events
Mohamadpur

http://prabartana.com/index.php?option=com_content&view=article&id=2&Itemid=2

Asiatic Society of Bangladesh

This is a centre that specialises in Asian societies and their culture, including artwork and buildings.

Nimtoli

HYPERLINK "<http://www.asiaticsociety.org.bd/index.htm>"

<http://www.asiaticsociety.org.bd/index.htm>

Bishwa Shahitta Kendra

Meaning World Literature Centre, this non-profit organization promotes reading habits among the general population

14 Kazi Nazrul Islam Avenue, Bangla motor

Tel: 9660812

Institute of Fine Arts, University of Dhaka

The first arts institute in the country, one can find various student exhibitions and programs.

University of Dhaka Shahbag campus

Dhanmondi

Mohila Samity Theatre

This theatre shows new release Bengali films

New Baily Road, Dhaka

Tel: 9337050

Centre for Asian Theatre

Established in 1994, the Centre for Asian Theatre (CAT) is the country's first and only professional theatre organization. Productions include repertory productions (with the support

of the Royal Norwegian Embassy in Dhaka) street theatre productions, productions for children and puppet theatre productions

House 3, Road 16, Block G/1, Section 2, Mirpur

Tel: 9010469

<http://www.catbd.org/index.html>

Galleries

Saju Art Gallery

The venue for the annual Grand Group Art Exhibition, this gallery is known for displaying artwork from international and local artists.

F 28 DMC Market, Gulshan

Bengal Gallery of Fine Art

Since its establishment in, the Bengal Gallery of Fine Art has hosted exhibitions and showcases for over 250 international and local artists

House 275/F, Road 27, Dhanmondi

Tel: 8123115

National Art Gallery

This two-storey art gallery has exhibitions and workshops for students to partake in.

Shegun Bagicha

Tel: 9562801-4

Cezanne Art Gallery

This gallery displays paintings by local and professional artists.

Dhaka Sheraton, I Minto Road

Tel: 8826578

Gallery Chitrak

In addition to displaying the work of famous international and local artists, Gallery Chitrak is involved in assisting children in need.

House 21, Road 4. Dhanmondi

Tel: 8620345

Drik Gallery

This gallery was created in the 1980s to allow artists with artwork that was considered to be political to display their work. Today, it is known in Dhaka for its photography, painting and sculpture exhibits.

House 58, Road 15A, Dhanmondi

Tel: 9120125, 8123412, 8112954

Divine Art Gallery

Located at the Pan Pacific Sonargaon Hotel, this art gallery displays paintings by local and professional artists

Pan Pacific Sonargaon Hotel, 107 Kazi Nazrul Islam Avenue

Tel: 9130175

Bay's Galleria

One of the many gallerias in Dhaka
Gulshan Avenue Road No 23

Religious Places

All religions are fully embraced in Bangladesh. It is the only country that celebrates Muslim, Christian and Hindu calendar holidays. Several churches, temples and mosques can be found around Dhaka, including the following:

Dhaka International Christian Church

Basundhara, Dhaka

Shiddeswari Kali Mandir Hindu Temple

Shiddeswari, Dhaka

Dhaka International Buddhist Monastery

Merul Badda, Gulshan, Dhaka

Kakrail Mosque

Hare Road, Dhaka

Sat Gambuj Mosque

“Sat” meaning seven, this Mughal architecture mosque has seven domes Khulna, Bangladesh

Ramakrishna Math & Ramakrishna Mission

These twin organizations form the core of a worldwide spiritual movement known as Ramakrishna. The activities covered include education, health care and cultural activities.

27 Ramakrishna Mission Road, Dhaka

<http://www.rkmdhaka.org>

Dhakeshwari National Temple

This temple was named a national temple in order to reflect its importance as the centre of Hindu culture in Bangladesh, southwest of Dhaka University

Buddha Dhatu Jadi

Also known as the Bandarban Golden Temple, this is the largest Theravada, or teaching, temple in Bangladesh. It houses the country's second largest Buddha statue, Bandarban, Bangladesh

Armenian Church of the Holy Resurrection

This church, which dates from 1781, is sometimes referred to as an “oasis of tranquillity in the heart of a crowded city.” The Church records hold over 200 deaths between 1833 -1918, over 250 baptisms and over 50 marriages,

St. Mary's Cathedral

A beautiful historic cathedral in Armanitola, Old Dhaka

Ramna Kali Mandir

One of the most famous Hindu temples in the Indian subcontinent, the Ramna Kali Mandir was bulldozed by the Pakistani army as it commenced its genocide during the Bangladesh Liberation

War. Several temples have been built in the surrounding area, located near Ramna Park, Dhaka

Baittul Mukaram

The national mosque of Bangladesh, built in resemblance to the Ka'abah at Mecca Purana Paltan, Dhaka

Holy Rosemary Catholic Church

Known as Tejgaon Church, this church built in 1677 is the second church built by Portuguese Augustan missionaries who came to Bangladesh to introduce Christianity. Tejgaon, Dhaka

Tara Masjid

Tara Masjid, or the Star Mosque, is decorated with motifs of blue stars using imported Japanese and English china clay armanitola, Old Dhaka

Memorials & Museums

National Museum of Science and Technology

This museum aims to showcase the work of innovative local scientists and encourage the younger population to explore the possibilities of scientific knowledge. It is divided into three parts- biological science, technology, and physical science in Agargaon, Dhaka

Ahsan Manzil Museum

This museum has 23 galleries displaying furniture, portraits and other objects use by the Naweeb. Its majestic dome can be seen for miles around, located on the banks of the Buriganga River, Southern Dhaka

Bangabandhu Memorial Museum

The former home of the 'father of Bangladesh' Bangabandhu Sheikh Mujibur Rahman has been converted into a museum containing a rare collection of personal items and photographs.

House 10, Road 32, Dhanmondi, Dhaka

Liberation War Museum

This museum has over 10,000 items related to the Liberation War of 1971, including rare photographs and documents

5 Segun Bagicha, Dhaka

Tel: 9559091

<http://www.liberationwarmuseum.org/>

National Martyrs' Memorial

Designed by architect Moinul Hossein, the National Martyrs' Memorial was built in honour of those who were killed during the Bangladesh Liberation War of 1971.

Savar

National Museum

This museum has 3 levels dedicated to the history and culture of Bangladesh. Its displays include dioramas of daily life, plants and animals; and collections of pottery, paintings, jewellery and local handicrafts.

Shahbag, Dhaka

Folk Art Museum

Established in 1975, the Folk Art Museum in Sonargaon is a major attraction, both for the building itself and the exhibits, which include brass, bamboo and metal crafts, painted work, pottery, textiles, musical instruments and more.

Sonargaon, Dhaka

Zoos & Gardens

Dhaka Zoo

Established in 1974, the 186 acre Dhaka Zoo is home to 2,050 animals.

Mirpur, Dhaka

Baldha Garden

This garden has a rich collection of indigenous and exotic plants.

Wari, Old Dhaka

National Botanical Garden

With a land area of over 84 hectares, the National Botanical Garden of Bangladesh is the country's largest conservation centre

Mirpur, Dhaka

Other tourist spots

Sonargaon

One of the oldest capitals in Bangladesh, Sonargaon was the seat of Deva Dynasty until the 13th century. The area is known to have several historical buildings that are several hundred years old. Places of interest include the ruins of Panam Nagar, the Galdi Mosque and the tomb of Sultan Ghiyasuddin. Sonargaon is located approximately 27km from Dhaka.

Sonargaon, Bangladesh

Lalbagh Fort

This uncompleted fort was built in 1678 by Prince Mohammad Azam, son of Mughal Emperor Aurangzeb who was the Viceroy of Bengal at the time. It was the scene of a battle against the British during the 1857 war of independence

Situated on the banks of the Buriganga River, North-western Dhaka

Tourist Spots

When travelling out of Dhaka, use the following tips as a guideline:

Know which public transportation you're going to take- buses can be safe, yet crowded, so be sure to use a respectable and known company

Don't carry large amounts of money- always have spare change

Make sure you know where you're staying (i.e. a hotel, a resort)

Be sure to take with you the following items:

Identification

Insect repellent

First aid & any medication you may need

Mobile & charger

Cox's Bazaar

The beach at Cox's Bazaar is the world's longest natural sandy beach. This up-and-coming area has tons of cafes to enjoy and many sights to see. Highlights include the Buddhist monastery Aggmeda Khyang, the village of Ramu which is known for its handicrafts, and the Dulhazra Safari park, which is a sanctuary to elephants, bears, lions, Bengal tigers, crocodiles and various birds and monkeys. If you have the time, don't forget to take a trip to St. Martin's Island, the only coral island in Bangladesh.

Accommodation Options:

Seagull Hotel

Price ranges from 45USD for a single room to 132USD for a suite, per night

<http://www.seagullhotelbd.com/index.php>

Hotel Kollol

Prices range from 14USD for a single room to 51USD for a suite, per night

<http://www.hotelkollol.com/index.php>

Sundarbans

The Sundarbans, which translates literally to 'beautiful forest', is the largest mangrove forest in the world. It was made a UNESCO World Heritage site in 1997, and is known for the Royal Bengal Tiger, as well as other animals such as spotted deer, birds and crocodiles. There are three Wildlife Sanctuaries- Sundarbans East Wildlife Sanctuary, Sundarbans West Wildlife Sanctuary and **Sundarbans South Wildlife Sanctuary**.

Accommodation Options:

Bangladesh Parjatan Corporation provides tour packages from Dhaka-Sundarbans

<http://www.parjatan.gov.bd/forest.php>

Bandarbans

The Bandarban is known for its natural vistas and the Buddha Dhatu Jadi, the largest Buddhist temple in Bangladesh. It is also home to several ethnic groups of people and other Buddhist temples.

Accommodation Options:

Hillside Resort

The price for a single bed in a shared room of up to 15 people is \$USD. Private rooms and cottages are available for a higher price.

http://www.traveltocare.com/v3s2c1d163e2672g2h28i28l1m1/hotels/bangladesh/hillside_resort.aspx

Sylhet

Sylhet is known for its natural reserved forests and tea plants. Tourist destinations in the area include the waterfalls and rolling stones at Jaflong, Sripur, and Habiganj Madhabkunda.

Accommodation Options:

Nazimgarh Resort

This tranquil resort has jacuzzis, balconies and sun decks in most rooms. A spa and pool is available

to guests. Prices range from 75-195USD
<http://www.nazimgarh.com/home.php>

Rose View Hotel

Prices range from 65-350USD
<http://www.roseviewhotel.com/>